

- REDUCED EXCAVATION
- ADJUSTED FINISH LEVEL
- APARTMENT LAYOUT ADJUSTED AND AREA REDUCED TO INCREASE KITCHEN EXHAUST
- NEW BRIDGE BETWEEN RETAIL AREAS FULLY ENCLOSED
- NEW STAIR FROM BERRY STREET
- 2 NEW KIOSK SUBSTATIONS
- PODIUM MOVED FROM LEVEL 4 TO 3
- NEW ENTRY ARRANGEMENT AND NEW ESCALATORS
- NEW TERRACE LAYOUT
- NEW TERRACE FOR APARTMENT 22.07 AND POOL REPLACED BY BEDROOM
- INTERNAL APARTMENT LAYOUT CHANGES
- REDUCED HEAD HEIGHT LOADING BAY. 3600mm CLEARANCE
- NEW BUILDING ALIGNMENT
- ENTRY TO RESIDENTIAL LOBBY FROM L1 REMOVED
- NEW FIRE EGRESS AND NEW LOBBY LAYOUT
- NEW COMMON AREA LAYOUT
- NEW PLANT LAYOUT
- EXTENSION OF SLOPED GLAZING TO ROOF TOP
- LEVEL 3 RESIDENTIAL
- NEW APARTMENT
- EXTENDED AWNING TO DOOHAT LANE

SUMMARY OF BASEMENT CHANGES:

- REDUCED EXCAVATION FROM B5-B2
- RE-ARRANGEMENT OF CARPARKING, STORAGE CAGES AND BIKE STORAGE
- ENCLOSURE OF LIFT LOBBIES
- RE-ARRANGEMENT OF PLANT



BASEMENT 5  
REVISION 1  
08/12/15

144-154 PACIFIC HIGHWAY NORTH SYDNEY  
FUJI (NORTH SYDNEY) PTY LTD

14013  
DA2000  
1 : 200 @A3



AJ+C  
79 Myrtle Street, Chippendale NSW 2008  
AUSTRALIA  
ph +61 2 9211 8222 fx +61 2 9211 8220  
mob +61 400 792 292

- REDUCED EXCAVATION
- ADJUSTED FINISH LEVEL
- APARTMENT LAYOUT ADJUSTED AND AREA REDUCED TO INCREASE KITCHEN EXHAUST
- NEW BRIDGE BETWEEN RETAIL AREAS FULLY ENCLOSED
- NEW STAIR FROM BERRY STREET

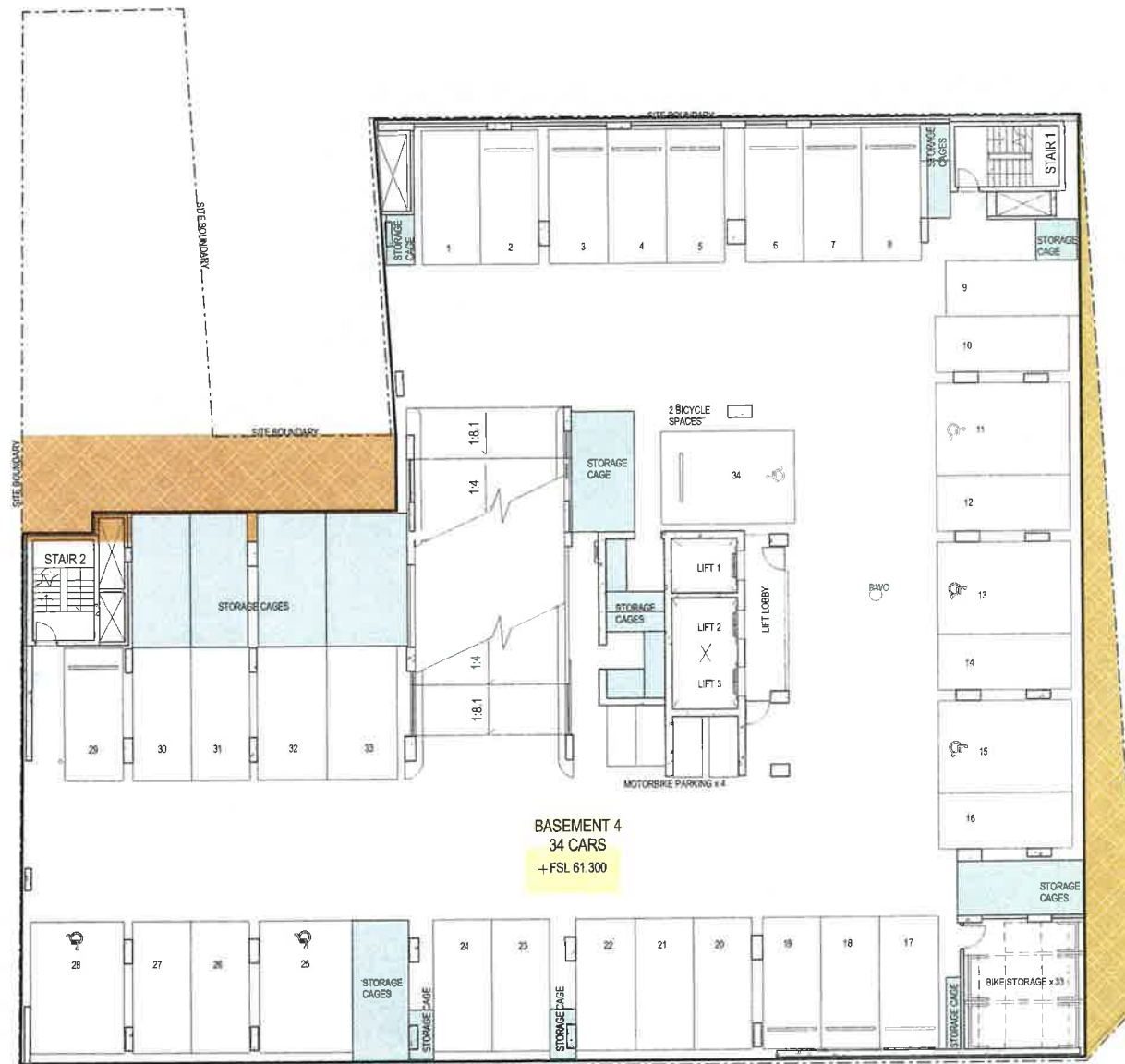
- 2 NEW KIOSK SUBSTATIONS
- PODIUM MOVED FROM LEVEL 4 TO 3
- NEW ENTRY ARRANGEMENT AND NEW ESCALATORS
- NEW TERRACE LAYOUT
- NEW TERRACE FOR APARTMENT 22.07 AND POOL REPLACED BY BEDROOM
- INTERNAL APARTMENT LAYOUT CHANGES
- REDUCED HEAD HEIGHT LOADING BAY 3600mm CLEARANCE
- NEW BUILDING ALIGNMENT
- ENTRY TO RESIDENTIAL LOBBY FROM L1 REMOVED
- NEW FIRE EGRESS AND NEW LOBBY LAYOUT
- NEW COMMON AREA LAYOUT

- NEW PLANT LAYOUT
- EXTENSION OF SLOPED GLAZING TO ROOF TOP
- LEVEL 3 RESIDENTIAL

- NEW APARTMENT
- EXTENDED AWNING TO DOOHAT LANE

SUMMARY OF BASEMENT CHANGES:

- REDUCED EXCAVATION FROM B5-B2
- RE-ARRANGEMENT OF CARPARKING, STORAGE CAGES AND BIKE STORAGE
- ENCLOSURE OF LIFT LOBBIES
- RE-ARRANGEMENT OF PLANT



BASEMENT 4  
34 CARS  
+ FSL 61.300

BASEMENT 4  
REVISION 1  
08/12/15

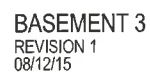
144-154 PACIFIC HIGHWAY NORTH SYDNEY  
FUJI (NORTH SYDNEY) PTY LTD

14013  
DA2001  
1 : 200 @A3



AJ+C  
79 Maple Street Chippendale NSW 2008  
AUSTRALIA  
ph +61 2 9311 8232 fax +61 2 9311 8200  
attn 55 000 710 250






















- SUMMARY OF BASEMENT CHANGES:
- REDUCED EXCAVATION FROM B5-B2
  - RE-ARRANGEMENT OF CARPARKING, STORAGE CAGES AND BIKE STORAGE
  - ENCLOSURE OF LIFT LOBBIES
  - RE-ARRANGEMENT OF PLANT



14013  
DA2002  
1:200 @A3

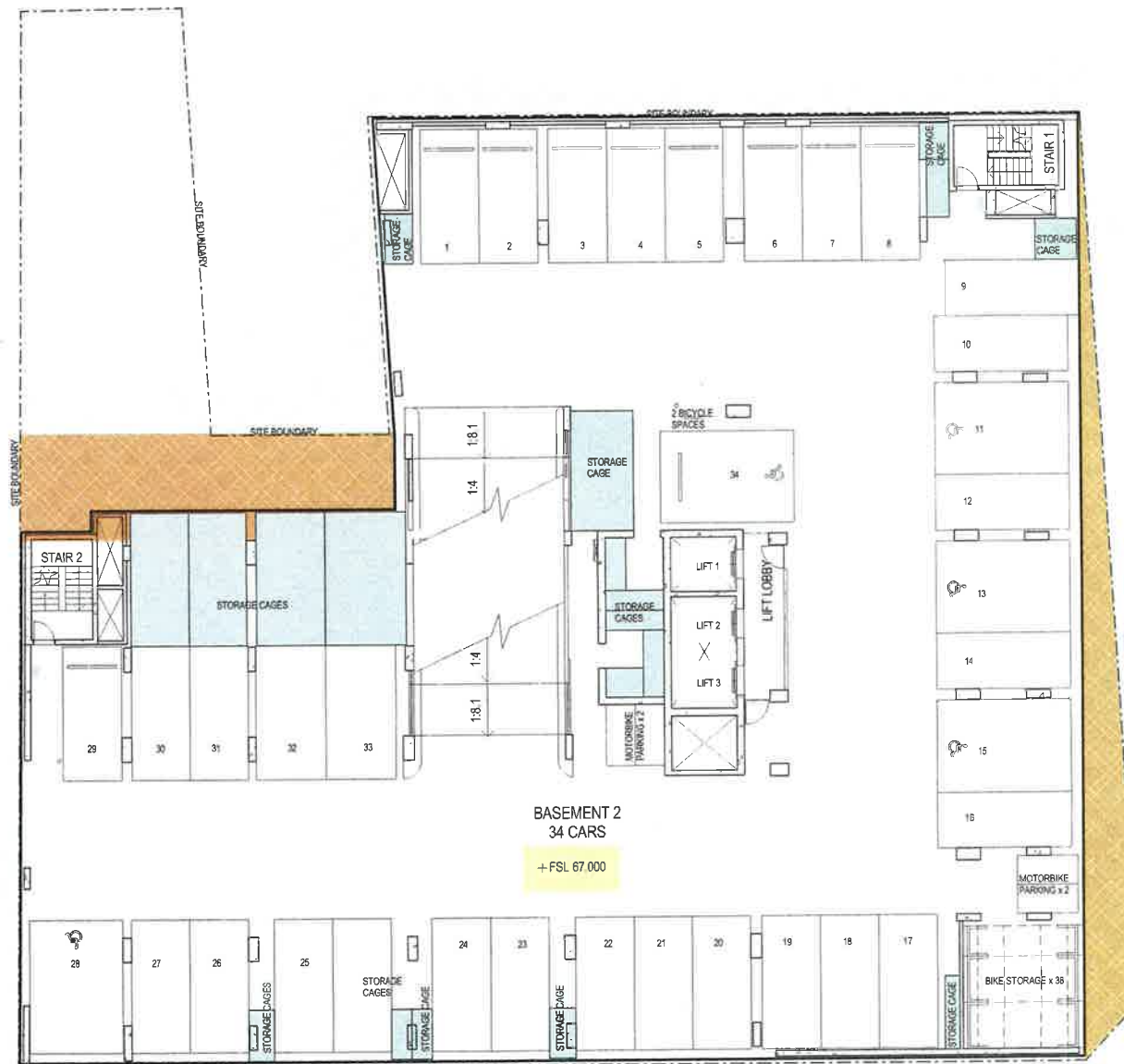


**AJ+C**  
ARCHITECTS  
75 Myrtle Street Clippenside NSW 2008  
AUSTRALIA  
P +61 2 9511 8772 | F +61 2 9311 8200  
ARN 53 003 782 296

-  REDUCED EXCAVATION
-  ADJUSTED FINISH LEVEL
-  APARTMENT LAYOUT ADJUSTED AND AREA REDUCED TO INCREASE KITCHEN EXHAUST
-  NEW BRIDGE BETWEEN RETAIL AREAS FULLY ENCLOSED
-  NEW STAIR FROM BERRY STREET
-  2 NEW KIOSK SUBSTATIONS
-  PODIUM MOVED FROM LEVEL 4 TO 3
-  NEW ENTRY ARRANGEMENT AND NEW ESCALATORS
-  NEW TERRACE LAYOUT
-  NEW TERRACE FOR APARTMENT 22.07 AND POOL REPLACED BY BEDROOM
-  INTERNAL APARTMENT LAYOUT CHANGES
-  REDUCED HEAD HEIGHT LOADING BAY 3600mm CLEARANCE
-  NEW BUILDING ALIGNMENT
-  ENTRY TO RESIDENTIAL LOBBY FROM L1 REMOVED
-  NEW FIRE EGRESS AND NEW LOBBY LAYOUT
-  NEW COMMON AREA LAYOUT
-  NEW PLANT LAYOUT
-  EXTENSION OF SLOPED GLAZING TO ROOF TOP
-  LEVEL 3 RESIDENTIAL
-  NEW APARTMENT
-  EXTENDED AWNING TO DOOHAT LANE

SUMMARY OF BASEMENT CHANGES:

- REDUCED EXCAVATION FROM B5-B2
- RE-ARRANGEMENT OF CARPARKING, STORAGE CAGES AND BIKE STORAGE
- ENCLOSURE OF LIFT LOBBIES
- RE-ARRANGEMENT OF PLANT



BASEMENT 2  
34 CARS

+ FSL 67.000

BASEMENT 2  
REVISION 1  
08/12/15

144-154 PACIFIC HIGHWAY NORTH SYDNEY  
FUJI (NORTH SYDNEY) PTY LTD

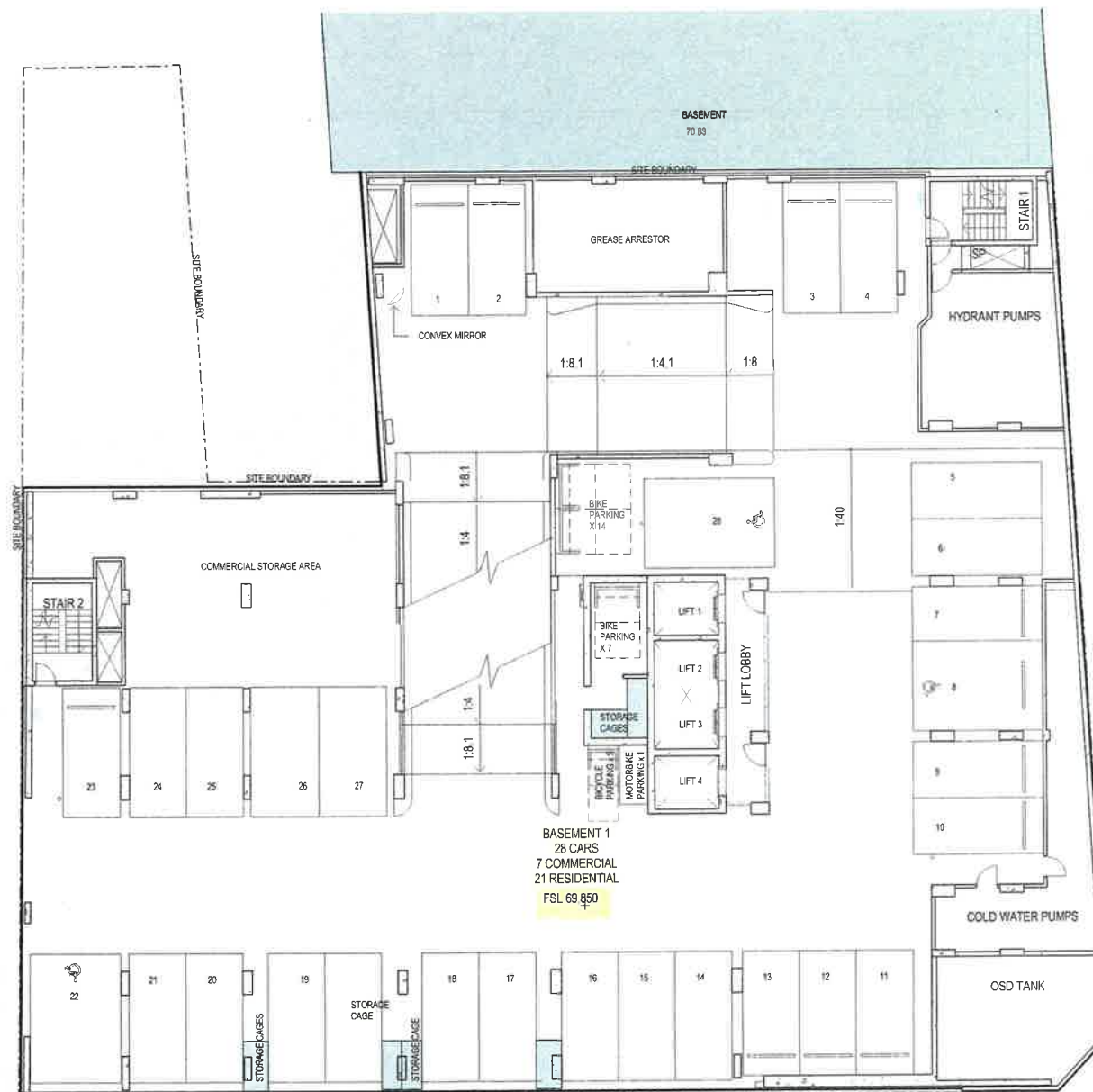
14013  
DA2003  
1:200 @A3



**AJC**  
ARCHITECTS  
76 Myrtle Street, Chippendale NSW 2008  
AUSTRALIA  
ph +61 2 9511 8222 fx +61 2 9511 8200  
www.ajc.com.au



- SUMMARY OF BASEMENT CHANGES:**
- REDUCED EXCAVATION FROM B5-B2
  - RE-ARRANGEMENT OF CARPARKING, STORAGE CAGES AND BIKE STORAGE
  - ENCLOSURE OF LIFT LOBBIES
  - RE-ARRANGEMENT OF PLANT



144-154 PACIFIC HIGHWAY NORTH SYDNEY  
FUJI (NORTH SYDNEY) PTY LTD

14013  
DA2004  
1:200 @A3

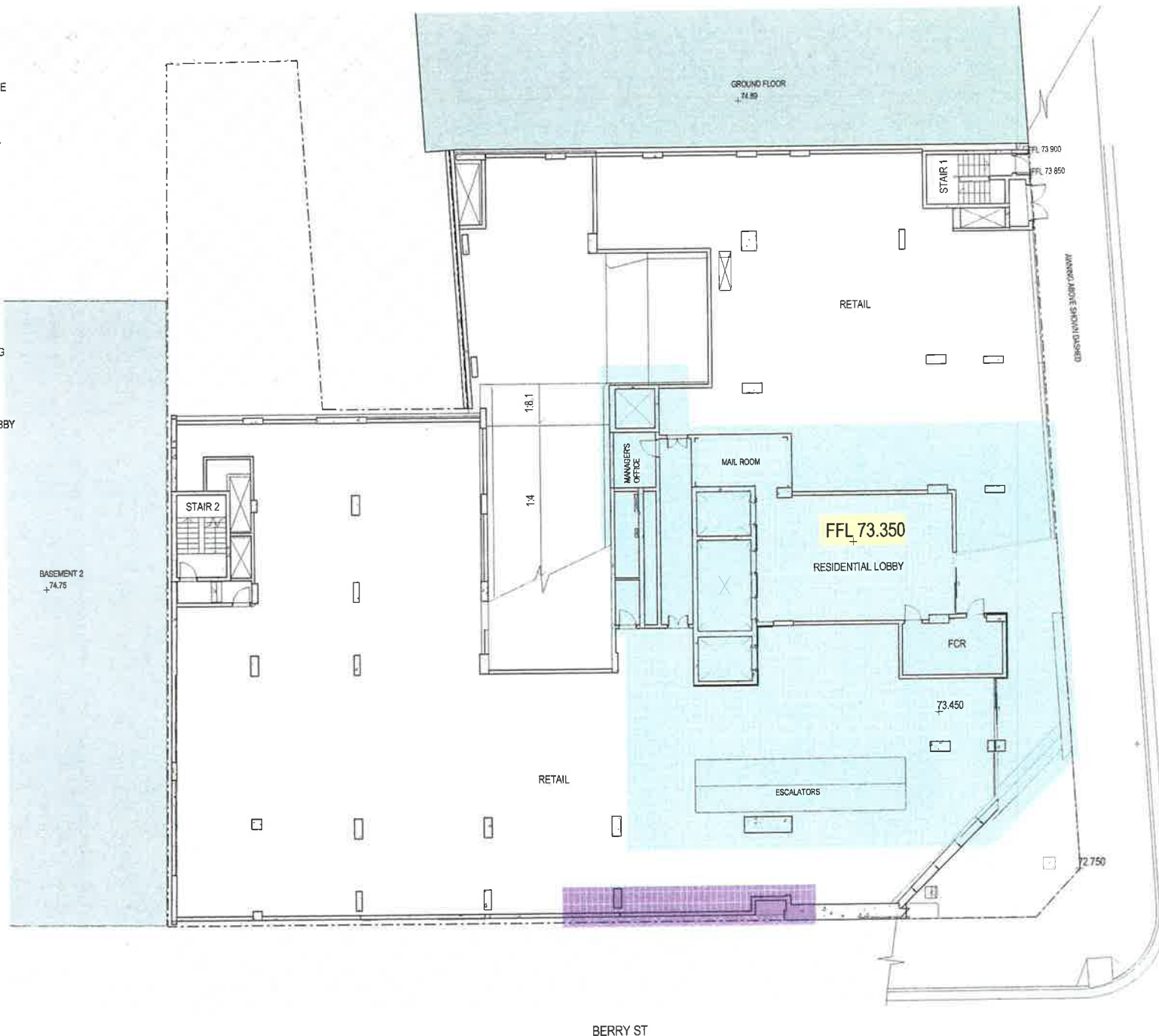


**AJ+C**  
A JOURNAL OF THE  
79 Myrtle Street, Chippendale NSW 2008  
AUSTRALIA  
p +61 2 9311 8222 fax +61 2 9311 0200  
OPEN 53 003 782 200

- REDUCED EXCAVATION
- ADJUSTED FINISH LEVEL
- APARTMENT LAYOUT ADJUSTED AND AREA REDUCED TO INCREASE KITCHEN EXHAUST
- NEW BRIDGE BETWEEN RETAIL AREAS FULLY ENCLOSED
- NEW STAIR FROM BERRY STREET
- 2 NEW KIOSK SUBSTATIONS
- PODIUM MOVED FROM LEVEL 4 TO 3
- NEW ENTRY ARRANGEMENT AND NEW ESCALATORS
- NEW TERRACE LAYOUT
- NEW TERRACE FOR APARTMENT 22.07 AND POOL REPLACED BY BEDROOM
- INTERNAL APARTMENT LAYOUT CHANGES
- REDUCED HEAD HEIGHT LOADING BAY 3600mm CLEARANCE
- NEW BUILDING ALIGNMENT
- ENTRY TO RESIDENTIAL LOBBY FROM L1 REMOVED
- NEW FIRE EGRESS AND NEW LOBBY LAYOUT
- NEW COMMON AREA LAYOUT
- NEW PLANT LAYOUT
- EXTENSION OF SLOPED GLAZING TO ROOF TOP
- LEVEL 3 RESIDENTIAL
- NEW APARTMENT
- EXTENDED AWNING TO DOOHAT LANE

SUMMARY OF BASEMENT CHANGES:

- REDUCED EXCAVATION FROM B5-B2
- RE-ARRANGEMENT OF CARPARKING, STORAGE CAGES AND BIKE STORAGE
- ENCLOSURE OF LIFT LOBBIES
- RE-ARRANGEMENT OF PLANT



GROUND  
REVISION 1  
08/12/15

144-154 PACIFIC HIGHWAY NORTH SYDNEY  
FUJI (NORTH SYDNEY) PTY LTD

14013  
DA2005  
1 : 200 @A3



**AJ+C**  
70 Myrtle Street, Chippendale NSW 2008  
AUSTRALIA  
ph: +61 2 9211 8222 fx: +61 2 9211 8050  
aia: 01 003 782 250

- REDUCED EXCAVATION
- ADJUSTED FINISH LEVEL
- APARTMENT LAYOUT ADJUSTED AND AREA REDUCED TO INCREASE KITCHEN EXHAUST
- NEW BRIDGE BETWEEN RETAIL AREAS FULLY ENCLOSED
- NEW STAIR FROM BERRY STREET
- 2 NEW KIOSK SUBSTATIONS
- PODIUM MOVED FROM LEVEL 4 TO 3
- NEW ENTRY ARRANGEMENT AND NEW ESCALATORS
- NEW TERRACE LAYOUT
- NEW TERRACE FOR APARTMENT 22.07 AND POOL REPLACED BY BEDROOM
- INTERNAL APARTMENT LAYOUT CHANGES
- REDUCED HEAD HEIGHT LOADING BAY 3600mm CLEARANCE
- NEW BUILDING ALIGNMENT
- ENTRY TO RESIDENTIAL LOBBY FROM L1 REMOVED
- NEW FIRE EGRESS AND NEW LOBBY LAYOUT
- NEW COMMON AREA LAYOUT
- NEW PLANT LAYOUT
- EXTENSION OF SLOPED GLAZING TO ROOF TOP
- LEVEL 3 RESIDENTIAL
- NEW APARTMENT
- EXTENDED AWNING TO DOOHAT LANE

SUMMARY OF BASEMENT CHANGES:

- REDUCED EXCAVATION FROM B5-B2
- RE-ARRANGEMENT OF CARPARKING, STORAGE CAGES AND BIKE STORAGE
- ENCLOSURE OF LIFT LOBBIES
- RE-ARRANGEMENT OF PLANT



LEVEL 1  
REVISION 1  
08/12/15

144-154 PACIFIC HIGHWAY NORTH SYDNEY  
FUJI (NORTH SYDNEY) PTY LTD

14013  
DA2006  
1 : 200 @A3



AJ+C  
29 Myrtle Street, Chippendale NSW 2008  
AUSTRALIA  
ph +61 2 9511 8222 fx +61 2 9511 8200  
www.ajc.com.au



- REDUCED EXCAVATION
- ADJUSTED FINISH LEVEL
- APARTMENT LAYOUT ADJUSTED AND AREA REDUCED TO INCREASE KITCHEN EXHAUST
- NEW BRIDGE BETWEEN RETAIL AREAS FULLY ENCLOSED
- NEW STAIR FROM BERRY STREET
- 2 NEW KIOSK SUBSTATIONS
- PODIUM MOVED FROM LEVEL 4 TO 3
- NEW ENTRY ARRANGEMENT AND NEW ESCALATORS
- NEW TERRACE LAYOUT
- NEW TERRACE FOR APARTMENT 22.07 AND POOL REPLACED BY BEDROOM
- INTERNAL APARTMENT LAYOUT CHANGES
- REDUCED HEAD HEIGHT LOADING BAY, 3600mm CLEARANCE
- NEW BUILDING ALIGNMENT
- ENTRY TO RESIDENTIAL LOBBY FROM L1 REMOVED
- NEW FIRE EGRESS AND NEW LOBBY LAYOUT
- NEW COMMON AREA LAYOUT
- NEW PLANT LAYOUT
- EXTENSION OF SLOPED GLAZING TO ROOF TOP
- LEVEL 3 RESIDENTIAL
- NEW APARTMENT
- EXTENDED AWNING TO DOOHAT LANE

SUMMARY OF BASEMENT CHANGES:

- REDUCED EXCAVATION FROM B5-B2
- RE-ARRANGEMENT OF CARPARKING, STORAGE CAGES AND BIKE STORAGE
- ENCLOSURE OF LIFT LOBBIES
- RE-ARRANGEMENT OF PLANT



LEVEL 2  
REVISION 1  
08/12/15

144-154 PACIFIC HIGHWAY NORTH SYDNEY  
FUJI (NORTH SYDNEY) PTY LTD

14013  
DA2007  
1: 200 @A3



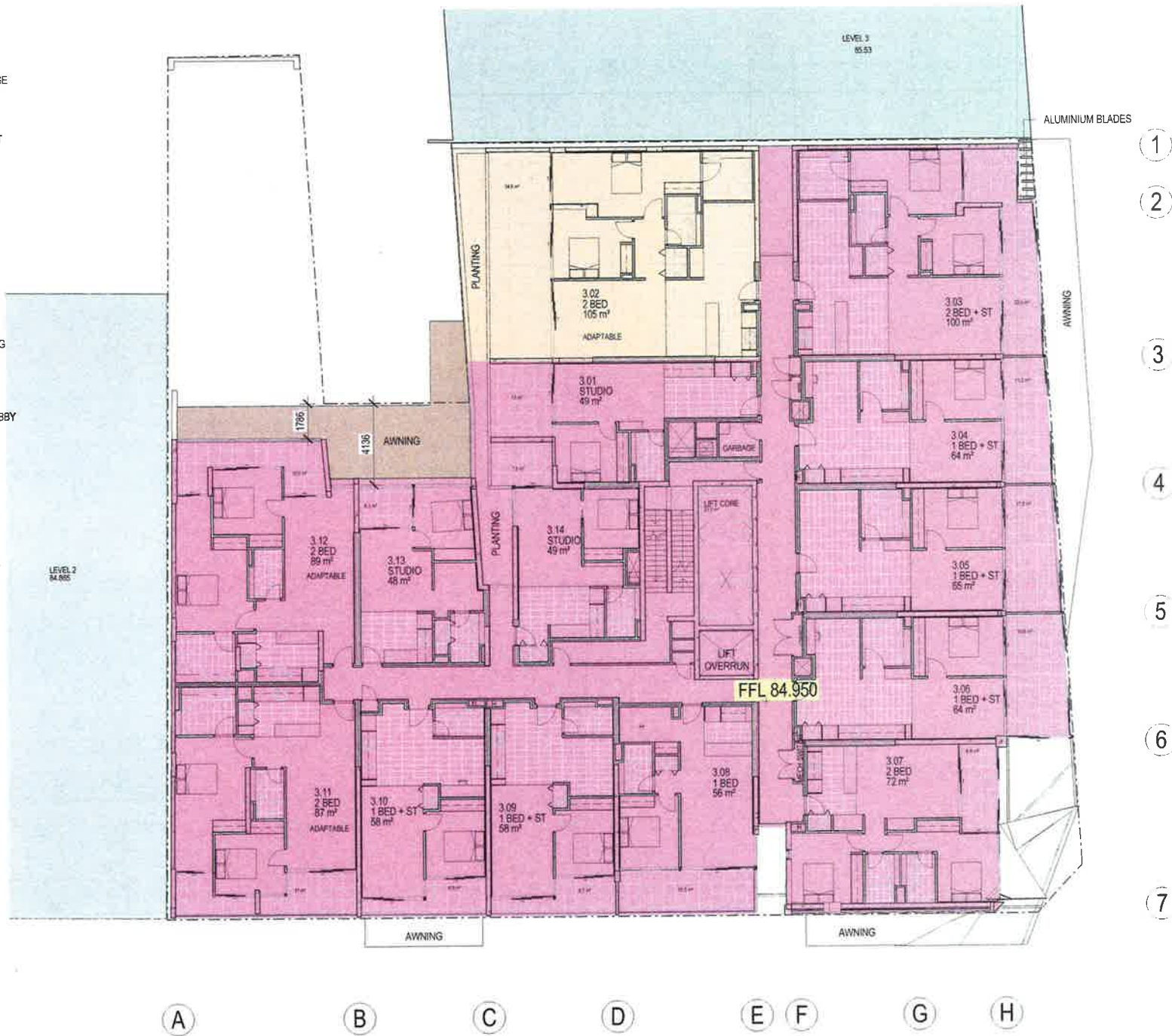
**AJ+C**  
Architects  
15 Myrtle Street, Chippendale NSW 2059  
ph: 02 9331 1122 fax: 02 9331 1200  
a/n: 51 001 760 550



- REDUCED EXCAVATION
- ADJUSTED FINISH LEVEL
- APARTMENT LAYOUT ADJUSTED AND AREA REDUCED TO INCREASE KITCHEN EXHAUST
- NEW BRIDGE BETWEEN RETAIL AREAS FULLY ENCLOSED
- NEW STAIR FROM BERRY STREET
- 2 NEW KIOSK SUBSTATIONS
- PODIUM MOVED FROM LEVEL 4 TO 3
- NEW ENTRY ARRANGEMENT AND NEW ESCALATORS
- NEW TERRACE LAYOUT
- NEW TERRACE FOR APARTMENT 22.07 AND POOL REPLACED BY BEDROOM
- INTERNAL APARTMENT LAYOUT CHANGES
- REDUCED HEAD HEIGHT LOADING BAY. 3600mm CLEARANCE
- NEW BUILDING ALIGNMENT
- ENTRY TO RESIDENTIAL LOBBY FROM L1 REMOVED
- NEW FIRE EGRESS AND NEW LOBBY LAYOUT
- NEW COMMON AREA LAYOUT
- NEW PLANT LAYOUT
- EXTENSION OF SLOPED GLAZING TO ROOF TOP
- LEVEL 3 RESIDENTIAL
- NEW APARTMENT
- EXTENDED AWNING TO DOOHAT LANE

SUMMARY OF BASEMENT CHANGES:

- REDUCED EXCAVATION FROM BS-B2
- RE-ARRANGEMENT OF CARPARKING, STORAGE CAGES AND BIKE STORAGE
- ENCLOSURE OF LIFT LOBBIES
- RE-ARRANGEMENT OF PLANT
























LEVEL 3  
REVISION 1  
08/12/15

144-154 PACIFIC HIGHWAY NORTH SYDNEY  
FUJI (NORTH SYDNEY) PTY LTD

14013  
DA2008  
1:200 @A3

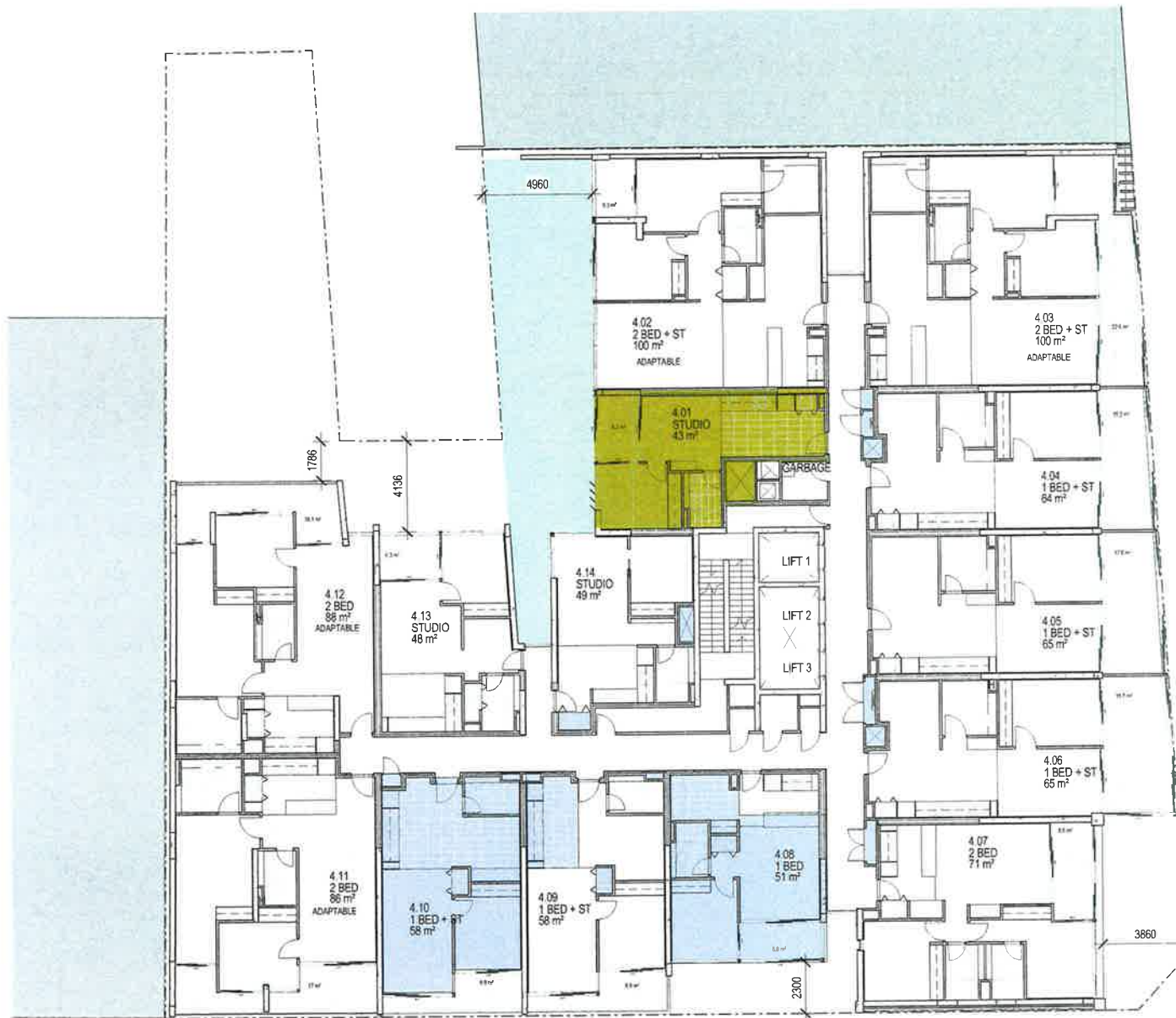


AJ+C  
78 Myrtle Street Chippendale NSW 2008  
AUSTRALIA  
p: +61 2 9911 8222 f: +61 2 9311 8220  
www.aj+c.com.au

-  REDUCED EXCAVATION
-  ADJUSTED FINISH LEVEL
-  APARTMENT LAYOUT ADJUSTED AND AREA REDUCED TO INCREASE KITCHEN EXHAUST
-  NEW BRIDGE BETWEEN RETAIL AREAS FULLY ENCLOSED
-  NEW STAIR FROM BERRY STREET
-  2 NEW KIOSK SUBSTATIONS
-  PODIUM MOVED FROM LEVEL 4 TO 3
-  NEW ENTRY ARRANGEMENT AND NEW ESCALATORS
-  NEW TERRACE LAYOUT
-  NEW TERRACE FOR APARTMENT 22.07 AND POOL REPLACED BY BEDROOM
-  INTERNAL APARTMENT LAYOUT CHANGES
-  REDUCED HEAD HEIGHT LOADING BAY 3600mm CLEARANCE
-  NEW BUILDING ALIGNMENT
-  ENTRY TO RESIDENTIAL LOBBY FROM L1 REMOVED
-  NEW FIRE EGRESS AND NEW LOBBY LAYOUT
-  NEW COMMON AREA LAYOUT
-  NEW PLANT LAYOUT
-  EXTENSION OF SLOPED GLAZING TO ROOF TOP
-  LEVEL 3 RESIDENTIAL
-  NEW APARTMENT
-  EXTENDED AWNING TO DOOHAT LANE

SUMMARY OF BASEMENT CHANGES:

- REDUCED EXCAVATION FROM B5-B2
- RE-ARRANGEMENT OF CARPARKING, STORAGE CAGES AND BIKE STORAGE
- ENCLOSURE OF LIFT LOBBIES
- RE-ARRANGEMENT OF PLANT



LEVEL 4  
REVISION 1  
08/12/15

144-154 PACIFIC HIGHWAY NORTH SYDNEY  
FUJI (NORTH SYDNEY) PTY LTD

14013  
DA2009  
1:200 @A3



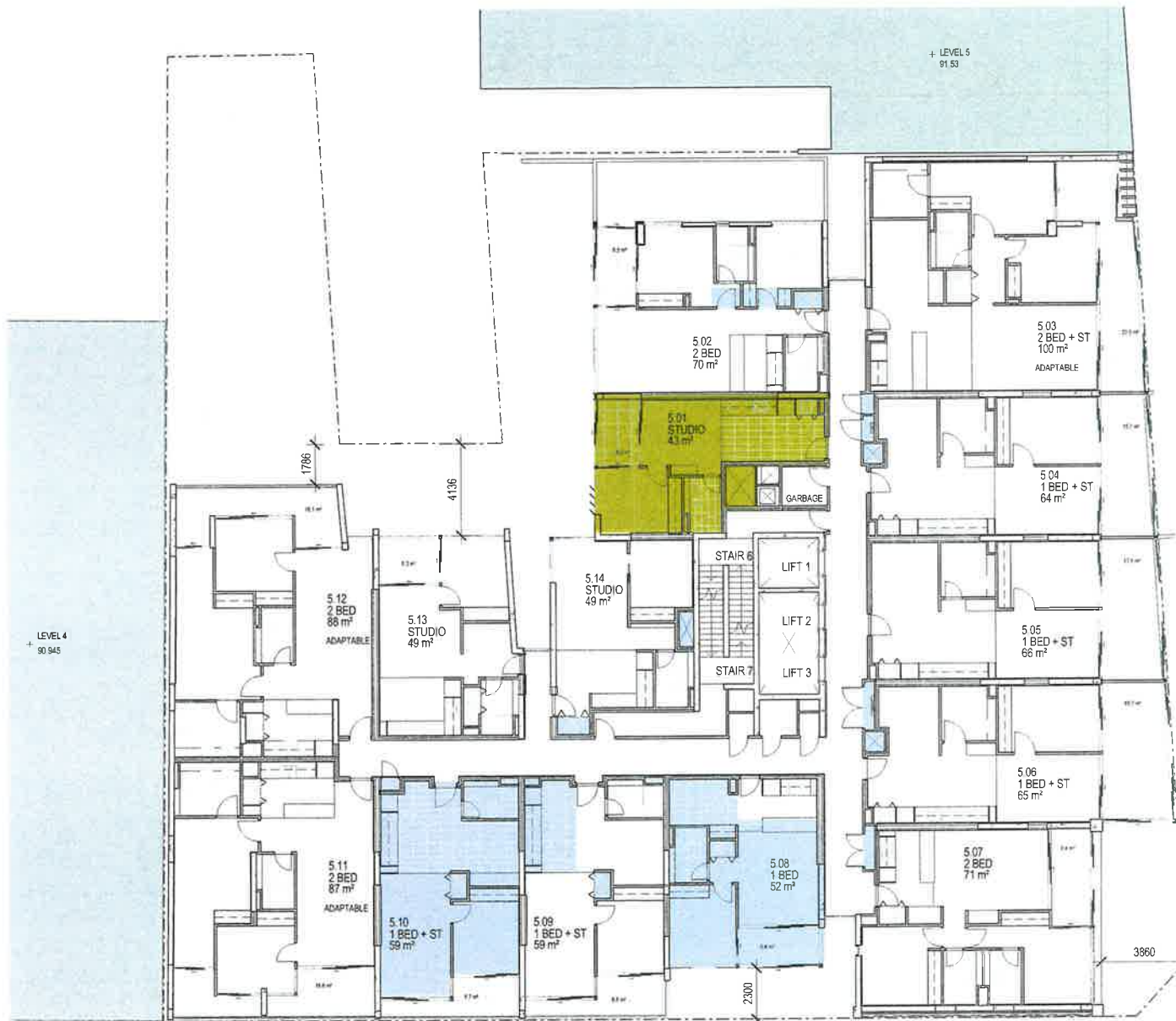
**AJ+C**  
ARCHITECTS  
78 Murrumbidgee Street, Sydney NSW 2000  
AUSTRALIA  
p: +61 2 9311 8222 f: +61 2 9311 8220  
www.aj+c.com.au



- REDUCED EXCAVATION
- ADJUSTED FINISH LEVEL
- APARTMENT LAYOUT ADJUSTED AND AREA REDUCED TO INCREASE KITCHEN EXHAUST
- NEW BRIDGE BETWEEN RETAIL AREAS FULLY ENCLOSED
- NEW STAIR FROM BERRY STREET
- 2 NEW KIOSK SUBSTATIONS
- PODIUM MOVED FROM LEVEL 4 TO 3
- NEW ENTRY ARRANGEMENT AND NEW ESCALATORS
- NEW TERRACE LAYOUT
- NEW TERRACE FOR APARTMENT 22 07 AND POOL REPLACED BY BEDROOM
- INTERNAL APARTMENT LAYOUT CHANGES
- REDUCED HEAD HEIGHT LOADING BAY 3600mm CLEARANCE
- NEW BUILDING ALIGNMENT
- ENTRY TO RESIDENTIAL LOBBY FROM L1 REMOVED
- NEW FIRE EGRESS AND NEW LOBBY LAYOUT
- NEW COMMON AREA LAYOUT
- NEW PLANT LAYOUT
- EXTENSION OF SLOPED GLAZING TO ROOF TOP
- LEVEL 3 RESIDENTIAL
- NEW APARTMENT
- EXTENDED AWNING TO DOOHAT LANE

SUMMARY OF BASEMENT CHANGES:

- REDUCED EXCAVATION FROM B5-B2
- RE-ARRANGEMENT OF CARPARKING, STORAGE CAGES AND BIKE STORAGE
- ENCLOSURE OF LIFT LOBBIES
- RE-ARRANGEMENT OF PLANT



LEVEL 5  
REVISION 1  
08/12/15

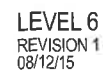
144-154 PACIFIC HIGHWAY NORTH SYDNEY  
FUJI (NORTH SYDNEY) PTY LTD

14013  
DA2010  
1 : 200 @A3



AJ+C  
75 Myrtle Street, Chesham NSW 2068  
AUSTRALIA  
p +61 2 9331 8772 f +61 2 9331 1200  
NBN 69 000 742 250

- SUMMARY OF BASEMENT CHANGES:**
- REDUCED EXCAVATION FROM B5-B2
  - RE-ARRANGEMENT OF CARPARKING, STORAGE CAGES AND BIKE STORAGE
  - ENCLOSURE OF LIFT LOBBIES
  - RE-ARRANGEMENT OF PLANT



14013  
DA2011  
1:200 @A3



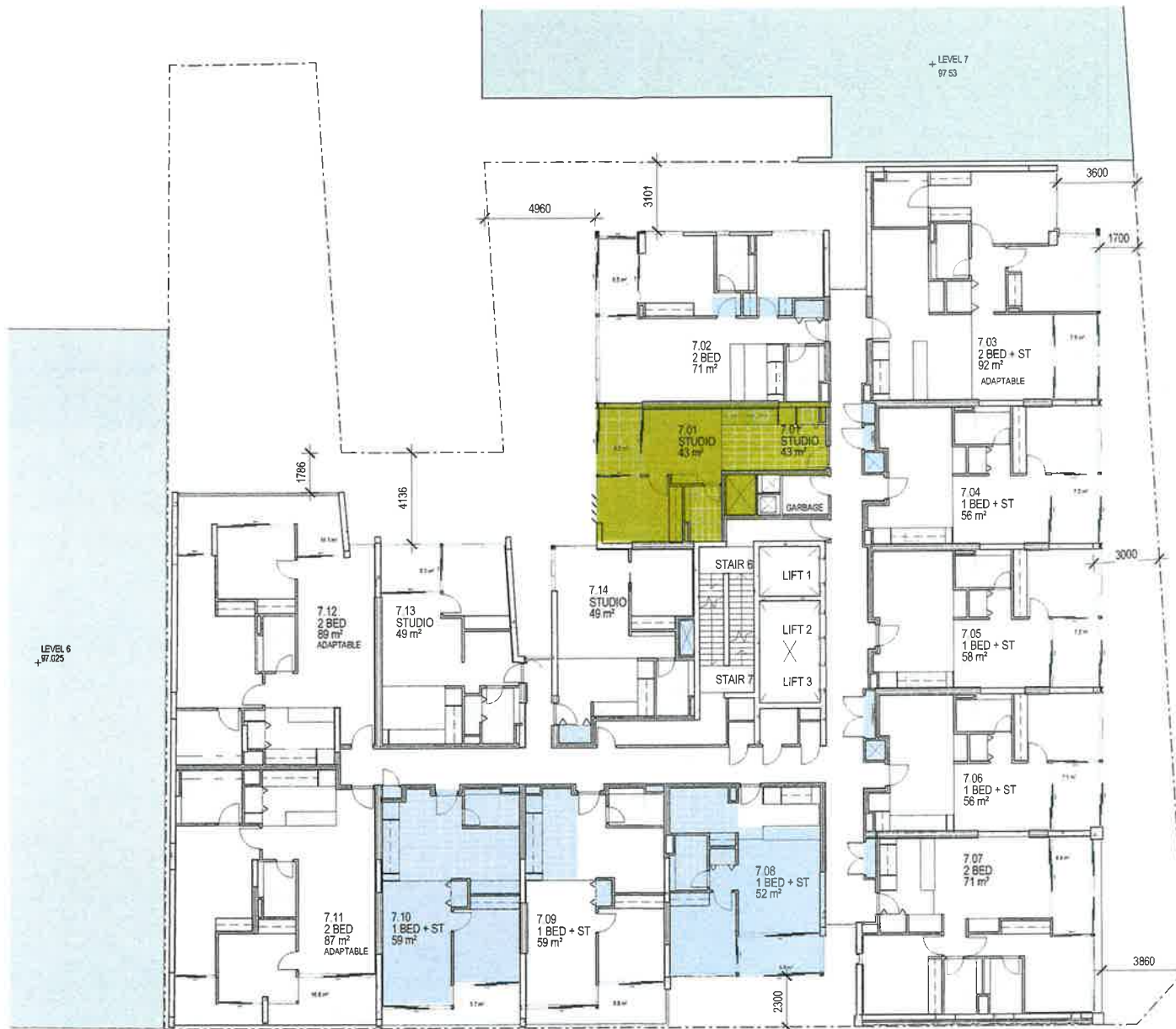
**AJ+C**  
 SYDNEY OFFICE  
 Sybil Sewell Chippendale, Director  
 481 2 9311 8222 fax +61 2 9311 8200  
 ABN 55 603 762 251



- REDUCED EXCAVATION
- ADJUSTED FINISH LEVEL
- APARTMENT LAYOUT ADJUSTED AND AREA REDUCED TO INCREASE KITCHEN EXHAUST
- NEW BRIDGE BETWEEN RETAIL AREAS FULLY ENCLOSED
- NEW STAIR FROM BERRY STREET
- 2 NEW KIOSK SUBSTATIONS
- PODIUM MOVED FROM LEVEL 4 TO 3
- NEW ENTRY ARRANGEMENT AND NEW ESCALATORS
- NEW TERRACE LAYOUT
- NEW TERRACE FOR APARTMENT 22.07 AND POOL REPLACED BY BEDROOM
- INTERNAL APARTMENT LAYOUT CHANGES
- REDUCED HEAD HEIGHT LOADING BAY, 3600mm CLEARANCE
- NEW BUILDING ALIGNMENT
- ENTRY TO RESIDENTIAL LOBBY FROM L1 REMOVED
- NEW FIRE EGRESS AND NEW LOBBY LAYOUT
- NEW COMMON AREA LAYOUT
- NEW PLANT LAYOUT
- EXTENSION OF SLOPED GLAZING TO ROOF TOP
- LEVEL 3 RESIDENTIAL
- NEW APARTMENT
- EXTENDED AWNING TO DOOHAT LANE

SUMMARY OF BASEMENT CHANGES:

- REDUCED EXCAVATION FROM B5-B2
- RE-ARRANGEMENT OF CARPARKING, STORAGE CAGES AND BIKE STORAGE
- ENCLOSURE OF LIFT LOBBIES
- RE-ARRANGEMENT OF PLANT
























LEVEL 7  
REVISION 1  
08/12/15

144-154 PACIFIC HIGHWAY NORTH SYDNEY  
FUJI (NORTH SYDNEY) PTY LTD

14013  
DA2012  
1 : 200 @A3

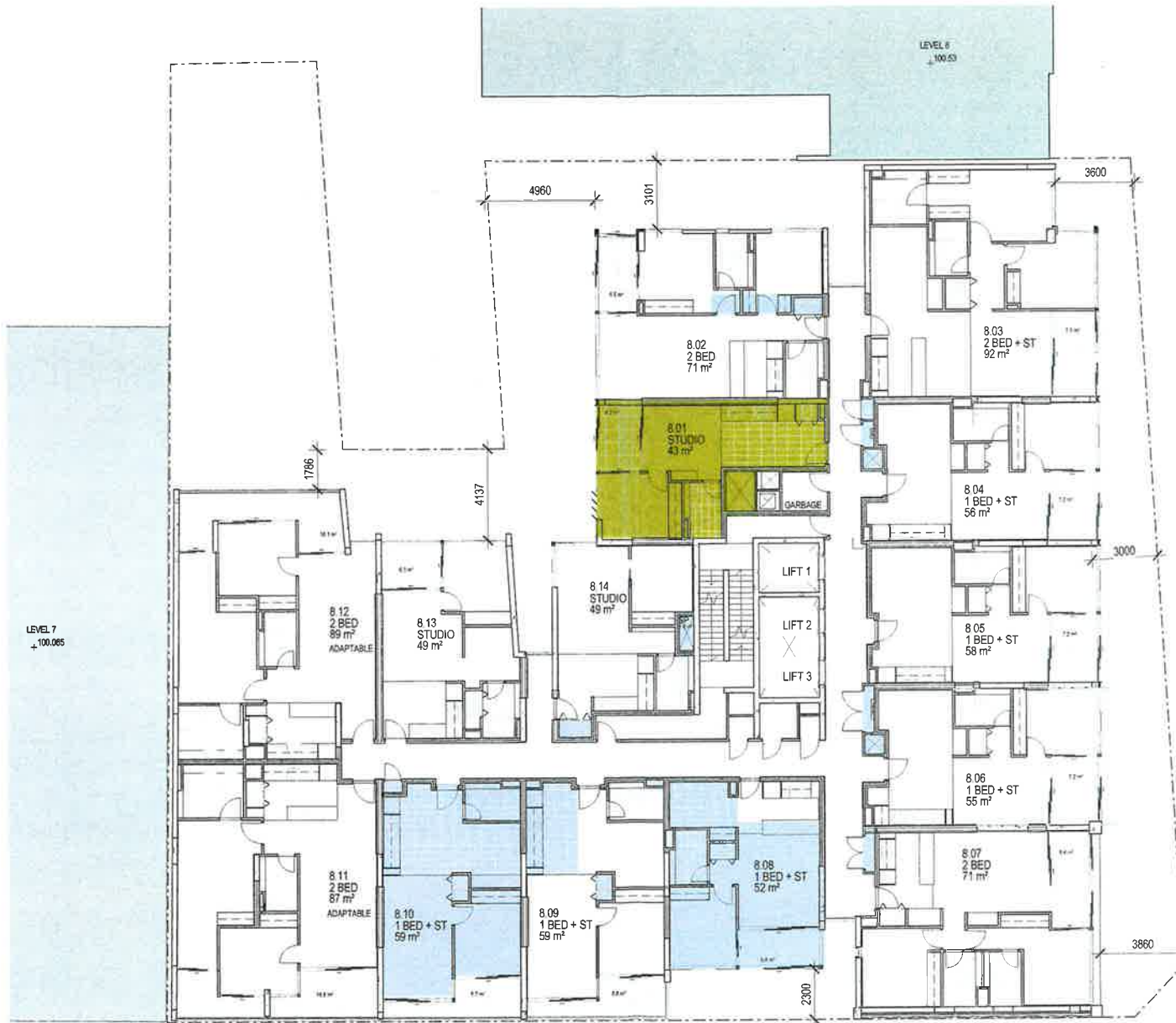


AJ+C  
75 Myrtle Street, Chippendale NSW 2008  
AUSTRALIA  
P: +61 2 9511 8222 F: +61 2 9511 8220  
A/N: 20 900 799 250

-  REDUCED EXCAVATION
-  ADJUSTED FINISH LEVEL
-  APARTMENT LAYOUT ADJUSTED AND AREA REDUCED TO INCREASE KITCHEN EXHAUST
-  NEW BRIDGE BETWEEN RETAIL AREAS FULLY ENCLOSED
-  NEW STAIR FROM BERRY STREET
-  2 NEW KIOSK SUBSTATIONS
-  PODIUM MOVED FROM LEVEL 4 TO 3
-  NEW ENTRY ARRANGEMENT AND NEW ESCALATORS
-  NEW TERRACE LAYOUT
-  NEW TERRACE FOR APARTMENT 22.07 AND POOL REPLACED BY BEDROOM
-  INTERNAL APARTMENT LAYOUT CHANGES
-  REDUCED HEAD HEIGHT LOADING BAY 3600mm CLEARANCE
-  NEW BUILDING ALIGNMENT
-  ENTRY TO RESIDENTIAL LOBBY FROM L1 REMOVED
-  NEW FIRE EGRESS AND NEW LOBBY LAYOUT
-  NEW COMMON AREA LAYOUT
-  NEW PLANT LAYOUT
-  EXTENSION OF SLOPED GLAZING TO ROOF TOP
-  LEVEL 3 RESIDENTIAL
-  NEW APARTMENT
-  EXTENDED AWNING TO DOOHAT LANE

SUMMARY OF BASEMENT CHANGES:

- REDUCED EXCAVATION FROM B5-B2
- RE-ARRANGEMENT OF CARPARKING, STORAGE CAGES AND BIKE STORAGE
- ENCLOSURE OF LIFT LOBBIES
- RE-ARRANGEMENT OF PLANT














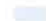








LEVEL 8  
REVISION 1  
08/12/15

144-154 PACIFIC HIGHWAY NORTH SYDNEY  
FUJI (NORTH SYDNEY) PTY LTD

14013  
DA2013  
1 : 200 @A3

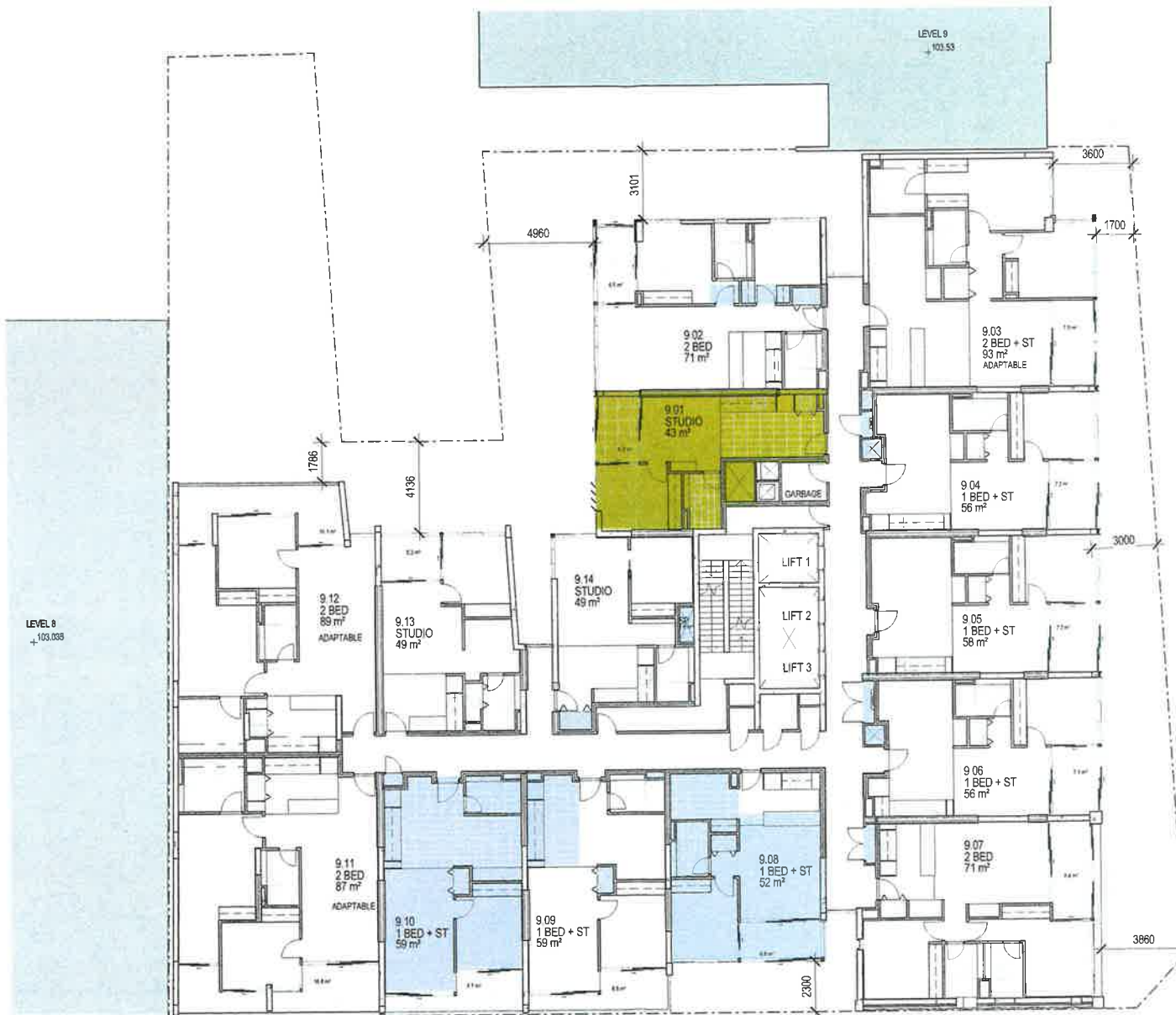


AJ+C  
74 Myrtle Street, Chippendale NSW 2008  
AUSTRALIA  
ph (61) 2 9211 1022 fax (61) 2 9211 9500  
aen 53 003 100 300

-  REDUCED EXCAVATION
-  ADJUSTED FINISH LEVEL
-  APARTMENT LAYOUT ADJUSTED AND AREA REDUCED TO INCREASE KITCHEN EXHAUST
-  NEW BRIDGE BETWEEN RETAIL AREAS FULLY ENCLOSED
-  NEW STAIR FROM BERRY STREET
-  2 NEW KIOSK SUBSTATIONS
-  PODIUM MOVED FROM LEVEL 4 TO 3
-  NEW ENTRY ARRANGEMENT AND NEW ESCALATORS
-  NEW TERRACE LAYOUT
-  NEW TERRACE FOR APARTMENT 22.07 AND POOL REPLACED BY BEDROOM
-  INTERNAL APARTMENT LAYOUT CHANGES
-  REDUCED HEAD HEIGHT LOADING BAY. 3600mm CLEARANCE
-  NEW BUILDING ALIGNMENT
-  ENTRY TO RESIDENTIAL LOBBY FROM L1 REMOVED
-  NEW FIRE EGRESS AND NEW LOBBY LAYOUT
-  NEW COMMON AREA LAYOUT
-  NEW PLANT LAYOUT
-  EXTENSION OF SLOPED GLAZING TO ROOF TOP
-  LEVEL 3 RESIDENTIAL
-  NEW APARTMENT
-  EXTENDED AWNING TO DOCHAT LANE

SUMMARY OF BASEMENT CHANGES:

- REDUCED EXCAVATION FROM B5-B2
- RE-ARRANGEMENT OF CARPARKING, STORAGE CAGES AND BIKE STORAGE
- ENCLOSURE OF LIFT LOBBIES
- RE-ARRANGEMENT OF PLANT



LEVEL 9  
REVISION 1  
08/12/15

144-154 PACIFIC HIGHWAY NORTH SYDNEY  
FUJI (NORTH SYDNEY) PTY LTD

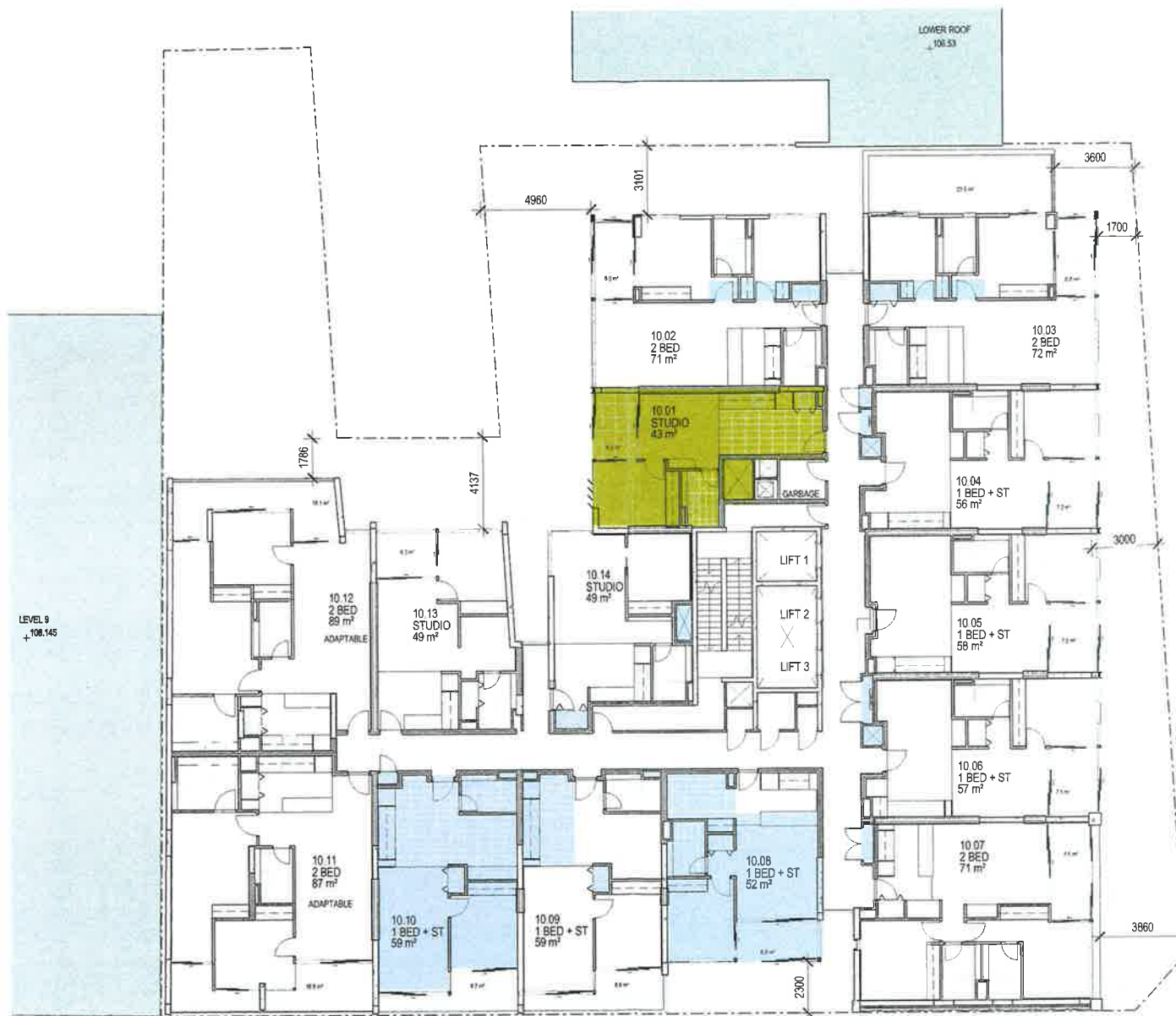
14013  
DA2014  
1 : 200 @A3



**AJ+C**  
ARCHITECTS  
71 Myrtle Street, Chippendale NSW 2008  
AUSTRALIA  
p: +61 2 9211 8022 f: +61 2 9211 8000  
www.ajc.com.au



- SUMMARY OF BASEMENT CHANGES:**
- REDUCED EXCAVATION FROM B5-B2
  - RE-ARRANGEMENT OF CARPARKING, STORAGE CAGES AND BIKE STORAGE
  - ENCLOSURE OF LIFT LOBBIES
  - RE-ARRANGEMENT OF PLANT





- REDUCED EXCAVATION
- ADJUSTED FINISH LEVEL
- APARTMENT LAYOUT ADJUSTED AND AREA REDUCED TO INCREASE KITCHEN EXHAUST
- NEW BRIDGE BETWEEN RETAIL AREAS FULLY ENCLOSED
- NEW STAIR FROM BERRY STREET
- 2 NEW KIOSK SUBSTATIONS
- PODIUM MOVED FROM LEVEL 4 TO 3
- NEW ENTRY ARRANGEMENT AND NEW ESCALATORS
- NEW TERRACE LAYOUT
- NEW TERRACE FOR APARTMENT 22.07 AND POOL REPLACED BY BEDROOM
- INTERNAL APARTMENT LAYOUT CHANGES
- REDUCED HEAD HEIGHT LOADING BAY, 3600mm CLEARANCE
- NEW BUILDING ALIGNMENT
- ENTRY TO RESIDENTIAL LOBBY FROM L1 REMOVED
- NEW FIRE EGRESS AND NEW LOBBY LAYOUT
- NEW COMMON AREA LAYOUT
- NEW PLANT LAYOUT
- EXTENSION OF SLOPED GLAZING TO ROOF TOP
- LEVEL 3 RESIDENTIAL
- NEW APARTMENT
- EXTENDED AWNING TO DOOHAT LANE

SUMMARY OF BASEMENT CHANGES:

- REDUCED EXCAVATION FROM BS-B2
- RE-ARRANGEMENT OF CARPARKING, STORAGE CAGES AND BIKE STORAGE
- ENCLOSURE OF LIFT LOBBIES
- RE-ARRANGEMENT OF PLANT

ROOF  
+109.210



LEVEL 11  
REVISION 1  
08/12/15

144-154 PACIFIC HIGHWAY NORTH SYDNEY  
FUJI (NORTH SYDNEY) PTY LTD

14013  
DA2016  
1:200 @A3



AJ+C  
70 Myrtle Street Chippendale NSW 2008  
AUSTRALIA  
ph +61 2 9511 8222 fx +61 2 9511 8200  
ABN 55 558 762 210

- REDUCED EXCAVATION
- ADJUSTED FINISH LEVEL
- APARTMENT LAYOUT ADJUSTED AND AREA REDUCED TO INCREASE KITCHEN EXHAUST
- NEW BRIDGE BETWEEN RETAIL AREAS FULLY ENCLOSED
- NEW STAIR FROM BERRY STREET
- 2 NEW KIOSK SUBSTATIONS
- PODIUM MOVED FROM LEVEL 4 TO 3
- NEW ENTRY ARRANGEMENT AND NEW ESCALATORS
- NEW TERRACE LAYOUT
- NEW TERRACE FOR APARTMENT 22.07 AND POOL REPLACED BY BEDROOM
- INTERNAL APARTMENT LAYOUT CHANGES
- REDUCED HEAD HEIGHT LOADING BAY 3600mm CLEARANCE
- NEW BUILDING ALIGNMENT
- ENTRY TO RESIDENTIAL LOBBY FROM L1 REMOVED
- NEW FIRE EGRESS AND NEW LOBBY LAYOUT
- NEW COMMON AREA LAYOUT
- NEW PLANT LAYOUT
- EXTENSION OF SLOPED GLAZING TO ROOF TOP
- LEVEL 3 RESIDENTIAL
- NEW APARTMENT
- EXTENDED AWNING TO DOOHAT LANE

SUMMARY OF BASEMENT CHANGES:

- REDUCED EXCAVATION FROM B5-B2
- RE-ARRANGEMENT OF CARPARKING, STORAGE CAGES AND BIKE STORAGE
- ENCLOSURE OF LIFT LOBBIES
- RE-ARRANGEMENT OF PLANT









LEVEL 12  
REVISION 1  
08/12/15

144-154 PACIFIC HIGHWAY NORTH SYDNEY  
FUJI (NORTH SYDNEY) PTY LTD

14013  
DA2017  
1:200 @A3



AJ+C  
75 Market Street, Chippendale, NSW 1505  
AUSTRALIA  
ph +61 2 9311 8222 fax +61 2 9311 8222  
www.ajc.com.au

-  REDUCED EXCAVATION
-  ADJUSTED FINISH LEVEL
-  APARTMENT LAYOUT ADJUSTED AND AREA REDUCED TO INCREASE KITCHEN EXHAUST
-  NEW BRIDGE BETWEEN RETAIL AREAS FULLY ENCLOSED
-  NEW STAIR FROM BERRY STREET
-  2 NEW KIOSK SUBSTATIONS
-  PODIUM MOVED FROM LEVEL 4 TO 3
-  NEW ENTRY ARRANGEMENT AND NEW ESCALATORS
-  NEW TERRACE LAYOUT
-  NEW TERRACE FOR APARTMENT 22.07 AND POOL REPLACED BY BEDROOM
-  INTERNAL APARTMENT LAYOUT CHANGES
-  REDUCED HEAD HEIGHT LOADING BAY 3600mm CLEARANCE
-  NEW BUILDING ALIGNMENT
-  ENTRY TO RESIDENTIAL LOBBY FROM L1 REMOVED
-  NEW FIRE EGRESS AND NEW LOBBY LAYOUT
-  NEW COMMON AREA LAYOUT
-  NEW PLANT LAYOUT
-  EXTENSION OF SLOPED GLAZING TO ROOF TOP
-  LEVEL 3 RESIDENTIAL
-  NEW APARTMENT
-  EXTENDED AWNING TO DOOHAT LANE

SUMMARY OF BASEMENT CHANGES:

- REDUCED EXCAVATION FROM B5-B2
- RE-ARRANGEMENT OF CARPARKING, STORAGE CAGES AND BIKE STORAGE
- ENCLOSURE OF LIFT LOBBIES
- RE-ARRANGEMENT OF PLANT



LEVEL 13  
REVISION 1  
08/12/15

144-154 PACIFIC HIGHWAY NORTH SYDNEY  
FUJI (NORTH SYDNEY) PTY LTD

14013  
DA2018  
1 : 200 @A3



**AJIC**  
Architects  
144-154 Pacific Highway North Sydney  
New South Wales 1585  
Australia  
Tel: 02 9550 1234  
Fax: 02 9550 1235  
www.ajic.com.au

- REDUCED EXCAVATION
- ADJUSTED FINISH LEVEL
- APARTMENT LAYOUT ADJUSTED AND AREA REDUCED TO INCREASE KITCHEN EXHAUST
- NEW BRIDGE BETWEEN RETAIL AREAS FULLY ENCLOSED
- NEW STAIR FROM BERRY STREET

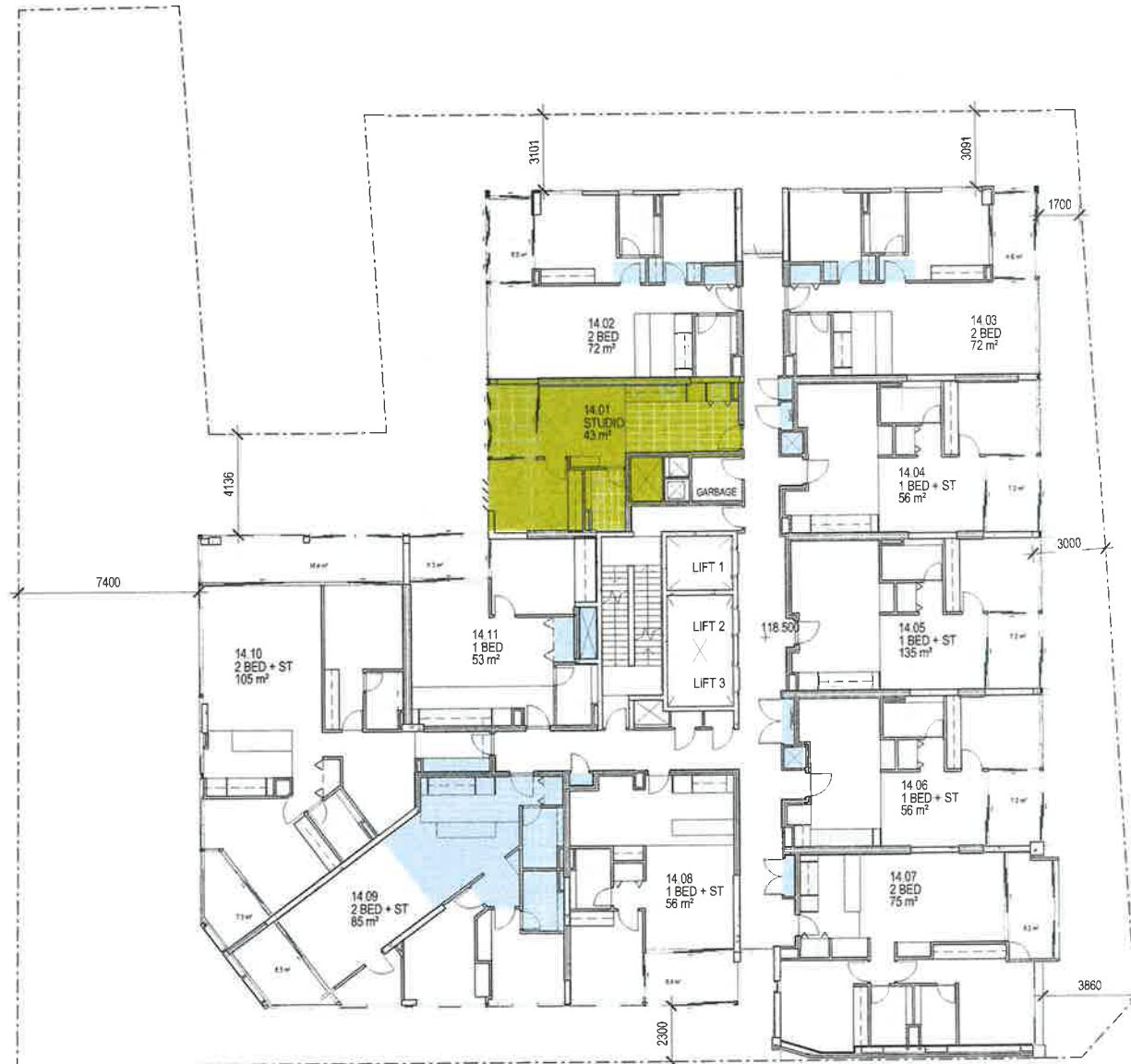
- 2 NEW KIOSK SUBSTATIONS
- PODIUM MOVED FROM LEVEL 4 TO 3
- NEW ENTRY ARRANGEMENT AND NEW ESCALATORS
- NEW TERRACE LAYOUT
- NEW TERRACE FOR APARTMENT 22.07 AND POOL REPLACED BY BEDROOM

- INTERNAL APARTMENT LAYOUT CHANGES
- REDUCED HEAD HEIGHT LOADING BAY 3600mm CLEARANCE
- NEW BUILDING ALIGNMENT
- ENTRY TO RESIDENTIAL LOBBY FROM L1 REMOVED
- NEW FIRE EGRESS AND NEW LOBBY LAYOUT
- NEW COMMON AREA LAYOUT

- NEW PLANT LAYOUT
- EXTENSION OF SLOPED GLAZING TO ROOF TOP
- LEVEL 3 RESIDENTIAL
- NEW APARTMENT
- EXTENDED AWNING TO DOOHAT LANE

SUMMARY OF BASEMENT CHANGES:

- REDUCED EXCAVATION FROM B5-B2
- RE-ARRANGEMENT OF CARPARKING, STORAGE CAGES AND BIKE STORAGE
- ENCLOSURE OF LIFT LOBBIES
- RE-ARRANGEMENT OF PLANT



LEVEL 14  
REVISION 1  
08/12/15

144-154 PACIFIC HIGHWAY NORTH SYDNEY  
FUJI (NORTH SYDNEY) PTY LTD

14013  
DA2019  
1 : 200 @A3



AJ+C  
79 Mylar Street Chippendale NSW 2008  
AUSTRALIA  
ph +61 2 9331 8322 fx +61 2 9331 8330  
ajc@ajc.com.au



-  REDUCED EXCAVATION
-  ADJUSTED FINISH LEVEL
-  APARTMENT LAYOUT ADJUSTED AND AREA REDUCED TO INCREASE KITCHEN EXHAUST
-  NEW BRIDGE BETWEEN RETAIL AREAS FULLY ENCLOSED
-  NEW STAIR FROM BERRY STREET
-  2 NEW KIOSK SUBSTATIONS
-  PODIUM MOVED FROM LEVEL 4 TO 3
-  NEW ENTRY ARRANGEMENT AND NEW ESCALATORS
-  NEW TERRACE LAYOUT
-  NEW TERRACE FOR APARTMENT 22.07 AND POOL REPLACED BY BEDROOM
-  INTERNAL APARTMENT LAYOUT CHANGES
-  REDUCED HEAD HEIGHT LOADING BAY 3600mm CLEARANCE
-  NEW BUILDING ALIGNMENT
-  ENTRY TO RESIDENTIAL LOBBY FROM L1 REMOVED
-  NEW FIRE EGRESS AND NEW LOBBY LAYOUT
-  NEW COMMON AREA LAYOUT
-  NEW PLANT LAYOUT
-  EXTENSION OF SLOPED GLAZING TO ROOF TOP
-  LEVEL 3 RESIDENTIAL
-  NEW APARTMENT
-  EXTENDED AWNING TO DOOHAT LANE

SUMMARY OF BASEMENT CHANGES:

- REDUCED EXCAVATION FROM B5-B2
- RE-ARRANGEMENT OF CARPARKING, STORAGE CAGES AND BIKE STORAGE
- ENCLOSURE OF LIFT LOBBIES
- RE-ARRANGEMENT OF PLANT



LEVEL 15  
REVISION 1  
08/12/15

144-154 PACIFIC HIGHWAY NORTH SYDNEY  
FUJI (NORTH SYDNEY) PTY LTD

14013  
DA2020  
1: 200 @A3



AJIC  
79 Myrle Street, Chippendale NSW 2008  
AUSTRALIA  
Tel: +61 2 9511 8952 Fax: +61 2 9511 8950  
Email: info@ajic.com.au

- REDUCED EXCAVATION
- ADJUSTED FINISH LEVEL
- APARTMENT LAYOUT ADJUSTED AND AREA REDUCED TO INCREASE KITCHEN EXHAUST
- NEW BRIDGE BETWEEN RETAIL AREAS FULLY ENCLOSED
- NEW STAIR FROM BERRY STREET
- 2 NEW KIOSK SUBSTATIONS
- PODIUM MOVED FROM LEVEL 4 TO 3
- NEW ENTRY ARRANGEMENT AND NEW ESCALATORS
- NEW TERRACE LAYOUT
- NEW TERRACE FOR APARTMENT 22.07 AND POOL REPLACED BY BEDROOM
- INTERNAL APARTMENT LAYOUT CHANGES
- REDUCED HEAD HEIGHT LOADING BAY, 3600mm CLEARANCE
- NEW BUILDING ALIGNMENT
- ENTRY TO RESIDENTIAL LOBBY FROM L1 REMOVED
- NEW FIRE EGRESS AND NEW LOBBY LAYOUT
- NEW COMMON AREA LAYOUT
- NEW PLANT LAYOUT
- EXTENSION OF SLOPED GLAZING TO ROOF TOP
- LEVEL 3 RESIDENTIAL
- NEW APARTMENT
- EXTENDED AWNING TO DOOHAT LANE

SUMMARY OF BASEMENT CHANGES:

- REDUCED EXCAVATION FROM B5-B2
- RE-ARRANGEMENT OF CARPARKING, STORAGE CAGES AND BIKE STORAGE
- ENCLOSURE OF LIFT LOBBIES
- RE-ARRANGEMENT OF PLANT
























LEVEL 16  
REVISION 1  
08/12/15

144-154 PACIFIC HIGHWAY NORTH SYDNEY  
FUJI (NORTH SYDNEY) PTY LTD

14013  
DA2021  
1 : 200 @A3



AJ+C  
79 Myrtle Street Chippendale NSW 2008  
AUSTRALIA  
Tel: +61 2 9331 1822 Fax: +61 2 9331 1800  
Email: info@ajc.com.au

-  REDUCED EXCAVATION
-  ADJUSTED FINISH LEVEL
-  APARTMENT LAYOUT ADJUSTED AND AREA REDUCED TO INCREASE KITCHEN EXHAUST
-  NEW BRIDGE BETWEEN RETAIL AREAS FULLY ENCLOSED
-  NEW STAIR FROM BERRY STREET
-  2 NEW KIOSK SUBSTATIONS
-  PODIUM MOVED FROM LEVEL 4 TO 3
-  NEW ENTRY ARRANGEMENT AND NEW ESCALATORS
-  NEW TERRACE LAYOUT
-  NEW TERRACE FOR APARTMENT 22.07 AND POOL REPLACED BY BEDROOM
-  INTERNAL APARTMENT LAYOUT CHANGES
-  REDUCED HEAD HEIGHT LOADING BAY 3600mm CLEARANCE
-  NEW BUILDING ALIGNMENT
-  ENTRY TO RESIDENTIAL LOBBY FROM L1 REMOVED
-  NEW FIRE EGRESS AND NEW LOBBY LAYOUT
-  NEW COMMON AREA LAYOUT
-  NEW PLANT LAYOUT
-  EXTENSION OF SLOPED GLAZING TO ROOF TOP
-  LEVEL 3 RESIDENTIAL
-  NEW APARTMENT
-  EXTENDED AWNING TO DOOHAT LANE

SUMMARY OF BASEMENT CHANGES:

- REDUCED EXCAVATION FROM B5-B2
- RE-ARRANGEMENT OF CARPARKING, STORAGE CAGES AND BIKE STORAGE
- ENCLOSURE OF LIFT LOBBIES
- RE-ARRANGEMENT OF PLANT



LEVEL 17  
REVISION 1  
08/12/15

144-154 PACIFIC HIGHWAY NORTH SYDNEY  
FUJI (NORTH SYDNEY) PTY LTD

14013  
DA2022  
1 : 200 @A3



**AJ+C**  
19 Myrtle Drive Campbellfield NSW 2108  
AUSTRALIA  
(61 61) 9 9311 9022 (61 61) 9 9311 9000  
FURN 51 003 789 250

-  REDUCED EXCAVATION
-  ADJUSTED FINISH LEVEL
-  APARTMENT LAYOUT ADJUSTED AND AREA REDUCED TO INCREASE KITCHEN EXHAUST
-  NEW BRIDGE BETWEEN RETAIL AREAS FULLY ENCLOSED
-  NEW STAIR FROM BERRY STREET
-  2 NEW KIOSK SUBSTATIONS
-  PODIUM MOVED FROM LEVEL 4 TO 3
-  NEW ENTRY ARRANGEMENT AND NEW ESCALATORS
-  NEW TERRACE LAYOUT
-  NEW TERRACE FOR APARTMENT 22.07 AND POOL REPLACED BY BEDROOM
-  INTERNAL APARTMENT LAYOUT CHANGES
-  REDUCED HEAD HEIGHT LOADING BAY 3600mm CLEARANCE
-  NEW BUILDING ALIGNMENT
-  ENTRY TO RESIDENTIAL LOBBY FROM L1 REMOVED
-  NEW FIRE EGRESS AND NEW LOBBY LAYOUT
-  NEW COMMON AREA LAYOUT
-  NEW PLANT LAYOUT
-  EXTENSION OF SLOPED GLAZING TO ROOF TOP
-  LEVEL 3 RESIDENTIAL
-  NEW APARTMENT
-  EXTENDED AWNING TO DOOHAT LANE

SUMMARY OF BASEMENT CHANGES:

- REDUCED EXCAVATION FROM B5-B2
- RE-ARRANGEMENT OF CARPARKING, STORAGE CAGES AND BIKE STORAGE
- ENCLOSURE OF LIFT LOBBIES
- RE-ARRANGEMENT OF PLANT



LEVEL 18  
REVISION 1  
08/12/15


















144-154 PACIFIC HIGHWAY NORTH SYDNEY  
FUJI (NORTH SYDNEY) PTY LTD

14013  
DA2023  
1: 200 @A3



**AJ+C**  
78 Myrtle Street, Chippendale NSW 2104  
AUSTRALIA  
ph +61 2 9551 1822 fax +61 2 9551 1830  
www.aj+c.com.au



-  REDUCED EXCAVATION
-  ADJUSTED FINISH LEVEL
-  APARTMENT LAYOUT ADJUSTED AND AREA REDUCED TO INCREASE KITCHEN EXHAUST
-  NEW BRIDGE BETWEEN RETAIL AREAS FULLY ENCLOSED
-  NEW STAIR FROM BERRY STREET
-  2 NEW KIOSK SUBSTATIONS
-  PODIUM MOVED FROM LEVEL 4 TO 3
-  NEW ENTRY ARRANGEMENT AND NEW ESCALATORS
-  NEW TERRACE LAYOUT
-  NEW TERRACE FOR APARTMENT 22.07 AND POOL REPLACED BY BEDROOM
-  INTERNAL APARTMENT LAYOUT CHANGES
-  REDUCED HEAD HEIGHT LOADING BAY 3600mm CLEARANCE
-  NEW BUILDING ALIGNMENT
-  ENTRY TO RESIDENTIAL LOBBY FROM L1 REMOVED
-  NEW FIRE EGRESS AND NEW LOBBY LAYOUT
-  NEW COMMON AREA LAYOUT
-  NEW PLANT LAYOUT
-  EXTENSION OF SLOPED GLAZING TO ROOF TOP
-  LEVEL 3 RESIDENTIAL
-  NEW APARTMENT
-  EXTENDED AWNING TO DOOHAT LANE

SUMMARY OF BASEMENT CHANGES:

- REDUCED EXCAVATION FROM B5-B2
- RE-ARRANGEMENT OF CARPARKING, STORAGE CAGES AND BIKE STORAGE
- ENCLOSURE OF LIFT LOBBIES
- RE-ARRANGEMENT OF PLANT



LEVEL 19  
REVISION 1  
08/12/15

144-154 PACIFIC HIGHWAY NORTH SYDNEY  
FUJI (NORTH SYDNEY) PTY LTD

14013  
DA2024  
1 : 200 @A3



**AJ+C**  
Architects  
214 Myrtle Street, Chippendale NSW 2008  
AUSTRALIA  
ph: +61 2 9311 8992 fax: +61 2 9311 8200  
ABN 52 000 707 270

-  REDUCED EXCAVATION
-  ADJUSTED FINISH LEVEL
-  APARTMENT LAYOUT ADJUSTED AND AREA REDUCED TO INCREASE KITCHEN EXHAUST
-  NEW BRIDGE BETWEEN RETAIL AREAS FULLY ENCLOSED
-  NEW STAIR FROM BERRY STREET
-  2 NEW KIOSK SUBSTATIONS
-  PODIUM MOVED FROM LEVEL 4 TO 3
-  NEW ENTRY ARRANGEMENT AND NEW ESCALATORS
-  NEW TERRACE LAYOUT
-  NEW TERRACE FOR APARTMENT 22.07 AND POOL REPLACED BY BEDROOM
-  INTERNAL APARTMENT LAYOUT CHANGES
-  REDUCED HEAD HEIGHT LOADING BAY 3600mm CLEARANCE
-  NEW BUILDING ALIGNMENT
-  ENTRY TO RESIDENTIAL LOBBY FROM L1 REMOVED
-  NEW FIRE EGRESS AND NEW LOBBY LAYOUT
-  NEW COMMON AREA LAYOUT
-  NEW PLANT LAYOUT
-  EXTENSION OF SLOPED GLAZING TO ROOF TOP
-  LEVEL 3 RESIDENTIAL
-  NEW APARTMENT
-  EXTENDED AWNING TO DOOHAT LANE

SUMMARY OF BASEMENT CHANGES

- REDUCED EXCAVATION FROM B5-B2
- RE-ARRANGEMENT OF CARPARKING, STORAGE CAGES AND BIKE STORAGE
- ENCLOSURE OF LIFT LOBBIES
- RE-ARRANGEMENT OF PLANT



LEVEL 20  
REVISION 1  
08/12/15

144-154 PACIFIC HIGHWAY NORTH SYDNEY  
FUJI (NORTH SYDNEY) PTY LTD

14013  
DA2025  
1:200 @A3



**AJ+C**  
79 Myrtle Street, Chippendale NSW 2008  
AUSTRALIA  
Tel: +61 2 9311 8252 Fax: +61 2 9311 8100  
www.aj+c.com.au

- REDUCED EXCAVATION
- ADJUSTED FINISH LEVEL
- APARTMENT LAYOUT ADJUSTED AND AREA REDUCED TO INCREASE KITCHEN EXHAUST
- NEW BRIDGE BETWEEN RETAIL AREAS FULLY ENCLOSED
- NEW STAIR FROM BERRY STREET
- 2 NEW KIOSK SUBSTATIONS
- PODIUM MOVED FROM LEVEL 4 TO 3
- NEW ENTRY ARRANGEMENT AND NEW ESCALATORS
- NEW TERRACE LAYOUT
- NEW TERRACE FOR APARTMENT 22.07 AND POOL REPLACED BY BEDROOM
- INTERNAL APARTMENT LAYOUT CHANGES
- REDUCED HEAD HEIGHT LOADING BAY. 3600mm CLEARANCE
- NEW BUILDING ALIGNMENT
- ENTRY TO RESIDENTIAL LOBBY FROM L1 REMOVED
- NEW FIRE EGRESS AND NEW LOBBY LAYOUT
- NEW COMMON AREA LAYOUT
- NEW PLANT LAYOUT
- EXTENSION OF SLOPED GLAZING TO ROOF TOP
- LEVEL 3 RESIDENTIAL
- NEW APARTMENT
- EXTENDED AWNING TO DOOHAT LANE

SUMMARY OF BASEMENT CHANGES:

- REDUCED EXCAVATION FROM B5-B2
- RE-ARRANGEMENT OF CARPARKING, STORAGE CAGES AND BIKE STORAGE
- ENCLOSURE OF LIFT LOBBIES
- RE-ARRANGEMENT OF PLANT



LEVEL 21  
REVISION 1  
08/12/15






















144-154 PACIFIC HIGHWAY NORTH SYDNEY  
FUJI (NORTH SYDNEY) PTY LTD

14013  
DA2026  
1:200 @A3



**AJ+C**  
70 Myrtle Street, Chippendale NSW 2150  
AUSTRALIA  
PH: 02 9551 1820 FAX: 02 9551 1850  
AORN: 00 509 1740 750



-  REDUCED EXCAVATION
-  ADJUSTED FINISH LEVEL
-  APARTMENT LAYOUT ADJUSTED AND AREA REDUCED TO INCREASE KITCHEN EXHAUST
-  NEW BRIDGE BETWEEN RETAIL AREAS FULLY ENCLOSED
-  NEW STAIR FROM BERRY STREET
-  2 NEW KIOSK SUBSTATIONS
-  PODIUM MOVED FROM LEVEL 4 TO 3
-  NEW ENTRY ARRANGEMENT AND NEW ESCALATORS
-  NEW TERRACE LAYOUT
-  NEW TERRACE FOR APARTMENT 22.07 AND POOL REPLACED BY BEDROOM
-  INTERNAL APARTMENT LAYOUT CHANGES
-  REDUCED HEAD HEIGHT LOADING BAY 3600mm CLEARANCE
-  NEW BUILDING ALIGNMENT
-  ENTRY TO RESIDENTIAL LOBBY FROM L1 REMOVED
-  NEW FIRE EGRESS AND NEW LOBBY LAYOUT
-  NEW COMMON AREA LAYOUT
-  NEW PLANT LAYOUT
-  EXTENSION OF SLOPED GLAZING TO ROOF TOP
-  LEVEL 3 RESIDENTIAL
-  NEW APARTMENT
-  EXTENDED AWNING TO DOOHAT LANE

SUMMARY OF BASEMENT CHANGES:

- REDUCED EXCAVATION FROM B5-B2
- RE-ARRANGEMENT OF CARPARKING, STORAGE CAGES AND BIKE STORAGE
- ENCLOSURE OF LIFT LOBBIES
- RE-ARRANGEMENT OF PLANT



LEVEL 22  
REVISION 1  
08/12/15

144-154 PACIFIC HIGHWAY NORTH SYDNEY  
FUJI (NORTH SYDNEY) PTY LTD

14013  
DA2027  
1 : 200 @A3



AJ+C  
14013 DA2027  
144-154 PACIFIC HIGHWAY NORTH SYDNEY  
AUSTRALIA  
pl. 4/1 2 15/11 12/22 14/1 2 15/11 12/22  
404 55 000 712 258

-  REDUCED EXCAVATION
-  ADJUSTED FINISH LEVEL
-  APARTMENT LAYOUT ADJUSTED AND AREA REDUCED TO INCREASE KITCHEN EXHAUST
-  NEW BRIDGE BETWEEN RETAIL AREAS FULLY ENCLOSED
-  NEW STAIR FROM BERRY STREET
-  2 NEW KIOSK SUBSTATIONS
-  PODIUM MOVED FROM LEVEL 4 TO 3
-  NEW ENTRY ARRANGEMENT AND NEW ESCALATORS
-  NEW TERRACE LAYOUT
-  NEW TERRACE FOR APARTMENT 22.07 AND POOL REPLACED BY BEDROOM
-  INTERNAL APARTMENT LAYOUT CHANGES
-  REDUCED HEAD HEIGHT LOADING BAY 3600mm CLEARANCE
-  NEW BUILDING ALIGNMENT
-  ENTRY TO RESIDENTIAL LOBBY FROM L1 REMOVED
-  NEW FIRE EGRESS AND NEW LOBBY LAYOUT
-  NEW COMMON AREA LAYOUT
-  NEW PLANT LAYOUT
-  EXTENSION OF SLOPED GLAZING TO ROOF TOP
-  LEVEL 3 RESIDENTIAL
-  NEW APARTMENT
-  EXTENDED AWNING TO DOOHAT LANE

SUMMARY OF BASEMENT CHANGES:

- REDUCED EXCAVATION FROM B5-B2
- RE-ARRANGEMENT OF CARPARKING, STORAGE CAGES AND BIKE STORAGE
- ENCLOSURE OF LIFT LOBBIES
- RE-ARRANGEMENT OF PLANT



LEVEL 23  
REVISION 1  
08/12/15

144-154 PACIFIC HIGHWAY NORTH SYDNEY  
FUJI (NORTH SYDNEY) PTY LTD

14013  
DA2028  
1 : 200 @A3

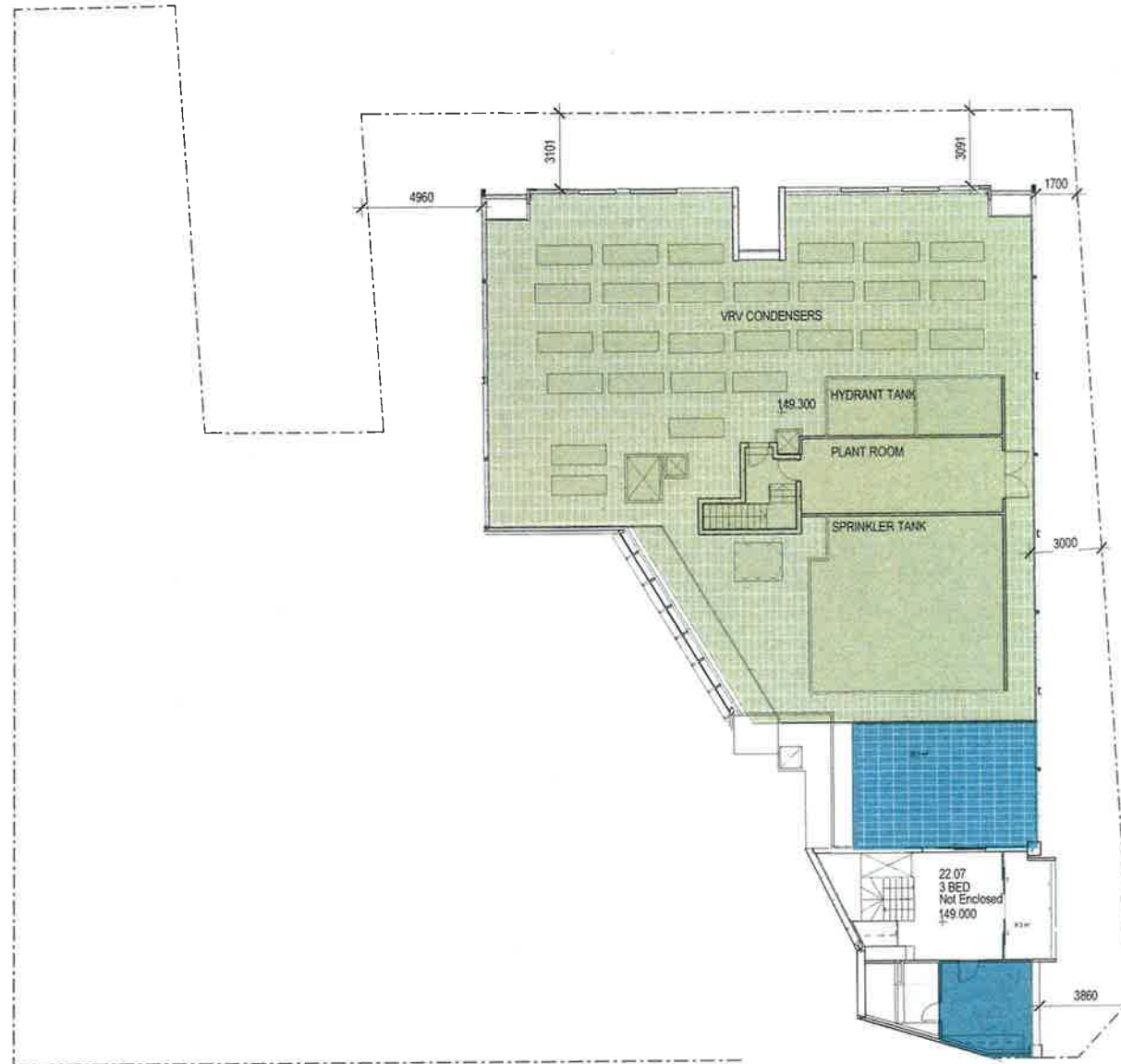


**AJ+C**  
Architects  
77 Martin Street, Chippendale NSW, 2006  
AUSTRALIA  
ph: +61 2 9311 1992 fx: +61 2 9311 1900  
www.ajc.com.au

- REDUCED EXCAVATION
- ADJUSTED FINISH LEVEL
- APARTMENT LAYOUT ADJUSTED AND AREA REDUCED TO INCREASE KITCHEN EXHAUST
- NEW BRIDGE BETWEEN RETAIL AREAS FULLY ENCLOSED
- NEW STAIR FROM BERRY STREET
- 2 NEW KIOSK SUBSTATIONS
- PODIUM MOVED FROM LEVEL 4 TO 3
- NEW ENTRY ARRANGEMENT AND NEW ESCALATORS
- NEW TERRACE LAYOUT
- NEW TERRACE FOR APARTMENT 22.07 AND POOL REPLACED BY BEDROOM
- INTERNAL APARTMENT LAYOUT CHANGES
- REDUCED HEAD HEIGHT LOADING BAY 3600mm CLEARANCE
- NEW BUILDING ALIGNMENT
- ENTRY TO RESIDENTIAL LOBBY FROM L1 REMOVED
- NEW FIRE EGRESS AND NEW LOBBY LAYOUT
- NEW COMMON AREA LAYOUT
- NEW PLANT LAYOUT
- EXTENSION OF SLOPED GLAZING TO ROOF TOP
- LEVEL 3 RESIDENTIAL
- NEW APARTMENT
- EXTENDED AWNING TO DOOHAT LANE

SUMMARY OF BASEMENT CHANGES:

- REDUCED EXCAVATION FROM B5-B2
- RE-ARRANGEMENT OF CARPARKING, STORAGE CAGES AND BIKE STORAGE
- ENCLOSURE OF LIFT LOBBIES
- RE-ARRANGEMENT OF PLANT



LEVEL 24  
REVISION 1  
08/12/15

144-154 PACIFIC HIGHWAY NORTH SYDNEY  
FUJI (NORTH SYDNEY) PTY LTD

14013  
DA2029  
1:200 @A3

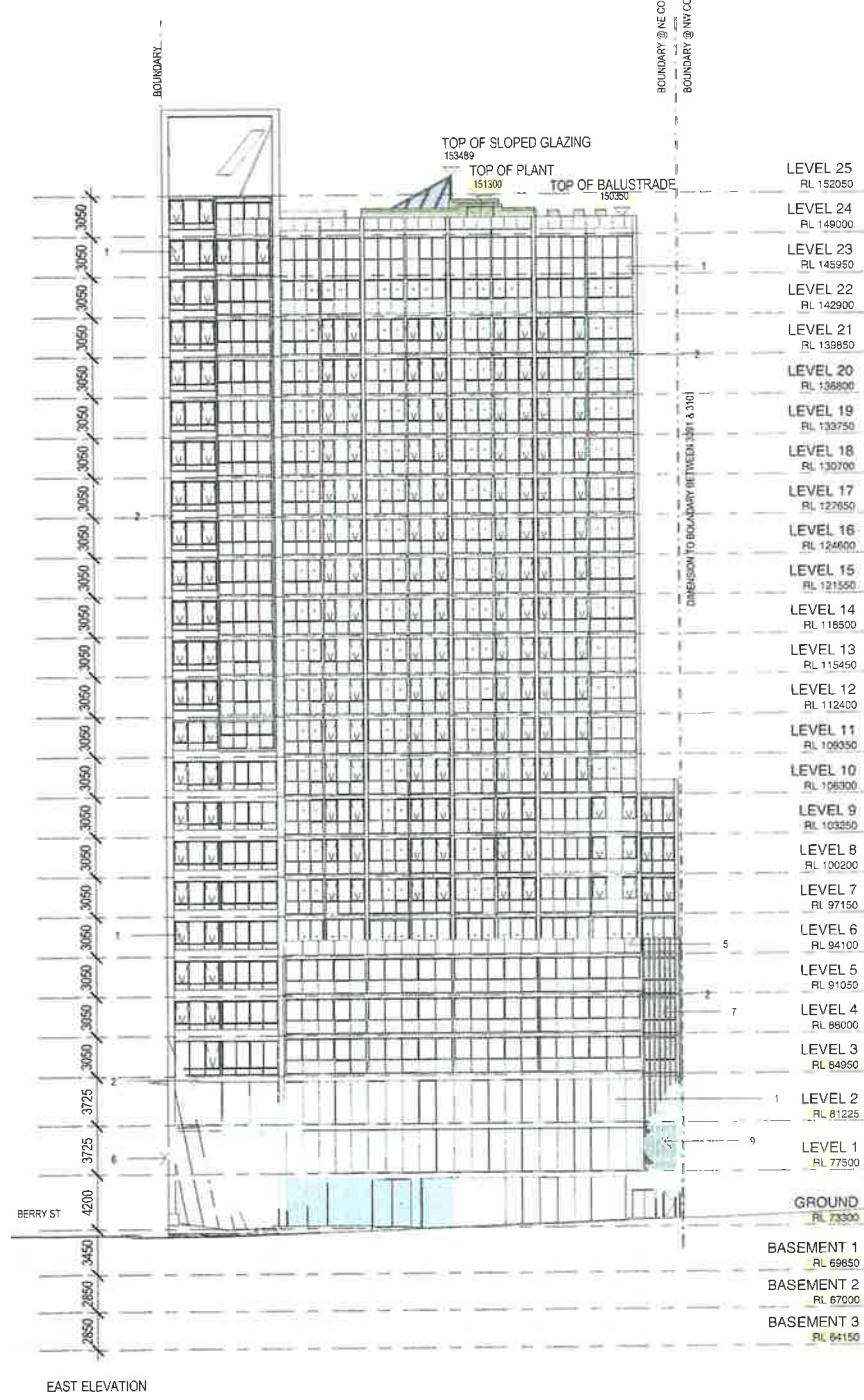


AJ+C  
ARCHITECTS  
79 Myrtle Street Chippendale NSW 2008  
AUSTRALIA  
ph +61 2 9511 8222 fax +61 2 9511 8200  
ABN 55 503 712 250





NORTH ELEVATION



EAST ELEVATION

- REDUCED EXCAVATION
- ADJUSTED FINISH LEVEL
- APARTMENT LAYOUT ADJUSTED AND AREA REDUCED TO INCREASE KITCHEN EXHAUST
- NEW BRIDGE BETWEEN RETAIL AREAS FULLY ENCLOSED
- NEW STAIR FROM BERRY STREET
- 2 NEW KIOSK SUBSTATIONS
- PODIUM MOVED FROM LEVEL 4 TO 3
- NEW ENTRY ARRANGEMENT AND NEW ESCALATORS
- NEW TERRACE LAYOUT
- NEW TERRACE FOR APARTMENT 22 07 AND POOL REPLACED BY BEDROOM
- INTERNAL APARTMENT LAYOUT CHANGES
- REDUCED HEAD HEIGHT LOADING BAY 3600mm CLEARANCE
- NEW BUILDING ALIGNMENT
- ENTRY TO RESIDENTIAL LOBBY FROM L1 REMOVED
- NEW FIRE EGRESS AND NEW LOBBY LAYOUT
- NEW COMMON AREA LAYOUT
- NEW PLANT LAYOUT
- EXTENSION OF SLOPED GLAZING TO ROOF TOP
- LEVEL 3 RESIDENTIAL
- NEW APARTMENT
- EXTENDED AWNING TO DOOHAT LANE

- SUMMARY OF BASEMENT CHANGES
- REDUCED EXCAVATION FROM BS-B2
  - RE-ARRANGEMENT OF CARPARKING STORAGE CAGES AND BIKE STORAGE
  - ENCLOSURE OF LIFT LOBBIES
  - RE-ARRANGEMENT OF PLANT

- 1 GLAZING
- 2 ALUMINIUM SLAB EDGE CLADDING
- 3 ANGLED ALUMINIUM PANELS
- 4 ALUMINIUM PANELS
- 5 GLAZED BALUSTRADE
- 6 METAL AWNING
- 7 VERTICAL ALUMINIUM BLADES
- 8 SOLID PANEL
- 9 MECHANICAL LOUVRES

N&E ELEVATIONS  
REVISION 1  
08/12/15

144-154 PACIFIC HIGHWAY NORTH SYDNEY  
FUJI (NORTH SYDNEY) PTY LTD

14013  
DA3101  
As indicated @A3

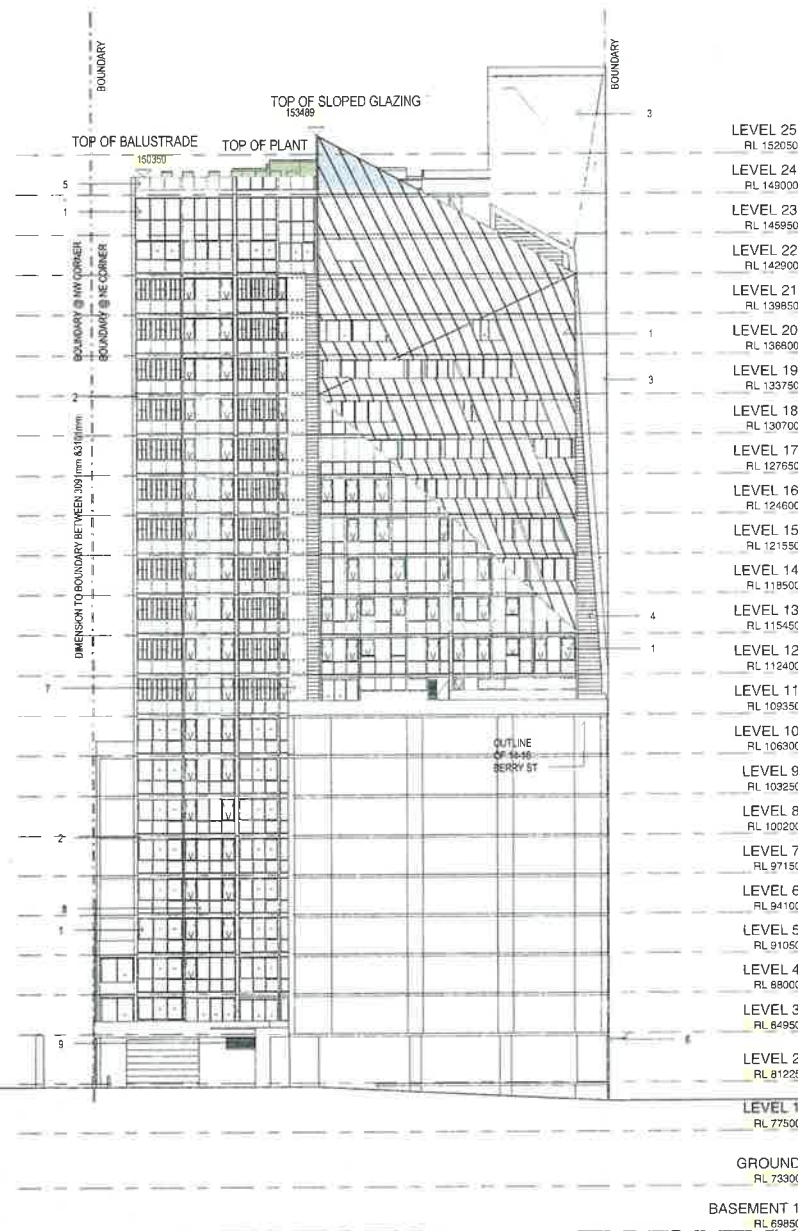


AJ+C

26 Maple Street, Chippendale NSW 2008  
AUSTRALIA  
Tel: +61 2 9311 8322 Fax: +61 2 9311 8200  
www.ajc.com.au



SOUTH ELEVATION



WEST ELEVATION

S&W ELEVATIONS  
REVISION 1  
08/12/15

144-154 PACIFIC HIGHWAY NORTH SYDNEY  
FUJI (NORTH SYDNEY) PTY LTD

14013  
DA3102  
As indicated @A3



AJ+C  
70 Myrtle Street Chippendale NSW 2008  
AUSTRALIA  
p (+61) 2 9311 8229 f (+61) 2 9311 8200  
aen.20.000-712.201

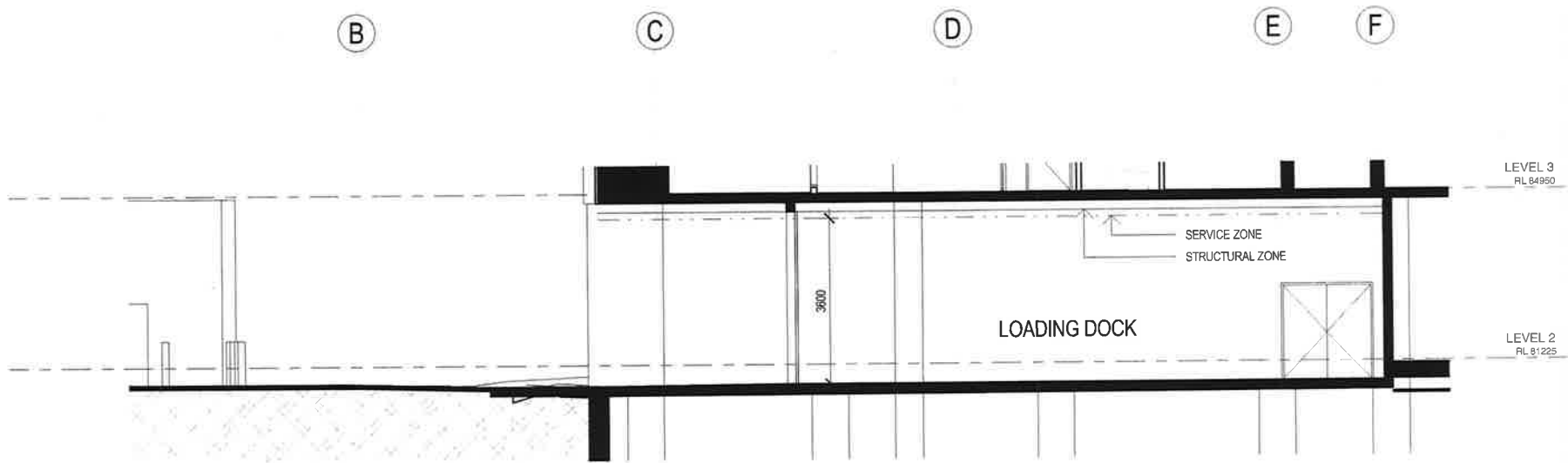
- REDUCED EXCAVATION
- ADJUSTED FINISH LEVEL
- APARTMENT LAYOUT ADJUSTED AND AREA REDUCED TO INCREASE KITCHEN EXHAUST
- NEW BRIDGE BETWEEN RETAIL AREAS FULLY ENCLOSED
- NEW STAIR FROM BERRY STREET
- 2 NEW KIOSK SUBSTATIONS

- PODIUM MOVED FROM LEVEL 4 TO 3
- NEW ENTRY ARRANGEMENT AND NEW ESCALATORS
- NEW TERRACE LAYOUT
- NEW TERRACE FOR APARTMENT 22.07 AND POOL REPLACED BY BEDROOM
- INTERNAL APARTMENT LAYOUT CHANGES
- REDUCED HEAD HEIGHT LOADING BAY 3600mm CLEARANCE
- NEW BUILDING ALIGNMENT
- ENTRY TO RESIDENTIAL LOBBY FROM L1 REMOVED
- NEW FIRE EGRESS AND NEW LOBBY LAYOUT
- NEW COMMON AREA LAYOUT
- NEW PLANT LAYOUT
- EXTENSION OF SLOPED GLAZING TO ROOF TOP
- LEVEL 3 RESIDENTIAL
- NEW APARTMENT
- EXTENDED AWNING TO DOOHAT LANE

- SUMMARY OF BASEMENT CHANGES
- REDUCED EXCAVATION FROM B5-B2
  - RE-ARRANGEMENT OF CARPARKING, STORAGE CAGES AND BIKE STORAGE
  - ENCLOSURE OF LIFT LOBBIES
  - RE-ARRANGEMENT OF PLANT

- 1 GLAZING
- 2 ALUMINIUM SLAB EDGE CLADDING
- 3 ANGLED ALUMINIUM PANELS
- 4 ALUMINIUM PANELS
- 5 GLAZED BALUSTRADE
- 6 METAL AWNING
- 7 VERTICAL ALUMINIUM BLADES
- 8 SOLID PANEL
- 9 MECHANICAL LOUVRES





LOADING DOCK  
REVISION 1  
08/12/15

144-154 PACIFIC HIGHWAY NORTH SYDNEY  
FUJI (NORTH SYDNEY) PTY LTD

14013  
DA3210  
1:100 @A3



AJ+C

75 Myrtle Street Chippendale NSW 2008  
AUSTRALIA  
ph +61 2 9311 8272 fax +61 2 9311 8300  
A/NZ INCORPORATED  
ABN 53 000 782 250